



# **Facility Construction Update**

Responsibilities, Tasks, and Timelines

# Bond Rating

- Bond rating team
  - Banks: 5/3 Bank, Huntington Bank
  - Administration: Dallas, Rick, Ray
  - Board: Randy, Forest
- Bond rating presentation on Jan. 21
  - Moody's
  - Standard and Poor's
- Receive rating on Jan. 28
- Bond issuance week of Feb. 4



# District Design Team Tasks- COMPLETED

- First round of visioning meetings
  - All schools, PTO/Boosters, administration
- Site, traffic concept, and safety meetings with County, Township, zoning officials
- Fire safety review with Anderson Township fire and safety representatives
- Program/concept development
- Beginning development of early site packages and summer project list



# District Design Team Tasks- IN PROCESS

- Meetings/on-going dialogue with administrators (principals, Central Office)
- Second round of building visioning meetings
- Community meetings
- Programming follow-up
- Schematic design



# Upcoming meetings

School	School administration meeting	Round 2 visioning meeting	Schematic design community meeting
Anderson High School	Week of 1/26	Week of 2/2	April/May
Turpin High School	Week of 1/26	Week of 2/2	April/May
Nagel Middle School	Week of 2/2	Week of 2/9	April/May
Wilson Elementary	Week of 2/9	Week of 2/16	End of February
Ayer Elementary	Week of 1/26	Week of 2/2	End of February
Sherwood Elementary	Week of 1/26	Week of 2/2	End of February
Summit Elementary	Week of 2/2	Week of 2/9	April
Maddux Elementary	Week of 2/2	Week of 2/9	April
Mercer Elementary	Week of 1/26	Week of 2/2	End of March



# Tasks and responsibilities

## KEY:

A= Approval Authority

R/R= Review and Recommend

L= Lead Responsible Party

I=Provides Input

Project	School Board	District Administration	Owner's Representative	Design Team	General Contractor
<b>Program Design/Development</b>					
Program Schedule	I	I	I	L	
Program Funding	A				
Program Budget	A	I	I	L	
Program Cost Control System	A	R/R	R/R	L	
<b>Schematic Design Phase</b>					
Programing Meetings/Community Input		I	I	L	
Project Schedule - Milestones	R/R	I	I	L	
Project Cost Estimates	R/R	R/R	R/R	L	
Code Approvals			R/R	L	
Surveys (Hazardous, Geotechnical, etc.)		R/R	I	L	
Schematic Design Package	A	I	I	L	
Value Engineering/Constructability Review	R/R	R/R	R/R	L	
Programming Follow-up Meetings		I	I	L	

# Tasks and responsibilities

**KEY:**  
 A= Approval Authority  
 R/R= Review and Recommend  
 L= Lead Responsible Party  
 I=Provides Input

Project	School Board	District Administration	Owner's Representative	Design Team	General Contractor
<b>Design Development Phase</b>					
Project Schedule		I	I	L	
Project Budget		R/R	R/R	L	
Design Development Review		R/R	R/R	L	
Design Development Board Update	R/R	I	I	L	
<b>Construction Documents Phase</b>					
Project Schedule	A	I	I	L	
Project Budget	A	R/R	R/R	L	
Construction Documents Review	A	R/R	R/R	L	
Construction Document Submittal	A	I	I	L	
<b>Bidding and Award Phase</b>					
Advertisement for Bid	A	I	I	L	
Respond to Questions			R/R	L	
Review of Bids/Recommend Award		R/R	R/R	L	
Bidding and Award Phase Reporting		I	I	L	
Contracting Documents		R/R	R/R	L	
Contract Award	A				

# Tasks and responsibilities

**KEY:**  
 A= Approval Authority  
 R/R= Review and Recommend  
 L= Lead Responsible Party  
 I=Provides Input

Project	School Board	District Administration	Owner's Representative	Design Team	General Contractor
<b>Construction Phase</b>					
Pre-Construction Meeting		I	I	L	
Construction Schedule		R/R	R/R	L	I
Construction Progress Meetings				L	I
Construction Observation		I	I	L	
Construction Phase Reporting/Liaison		I	L	L	
Field Issue Resolutions		I	R/R	L	
Pay Requests		A	I	L	
Change Orders	A	R/R	I	L	
Commissioning		I	I	L	
Substantial Completion		I	I	L	

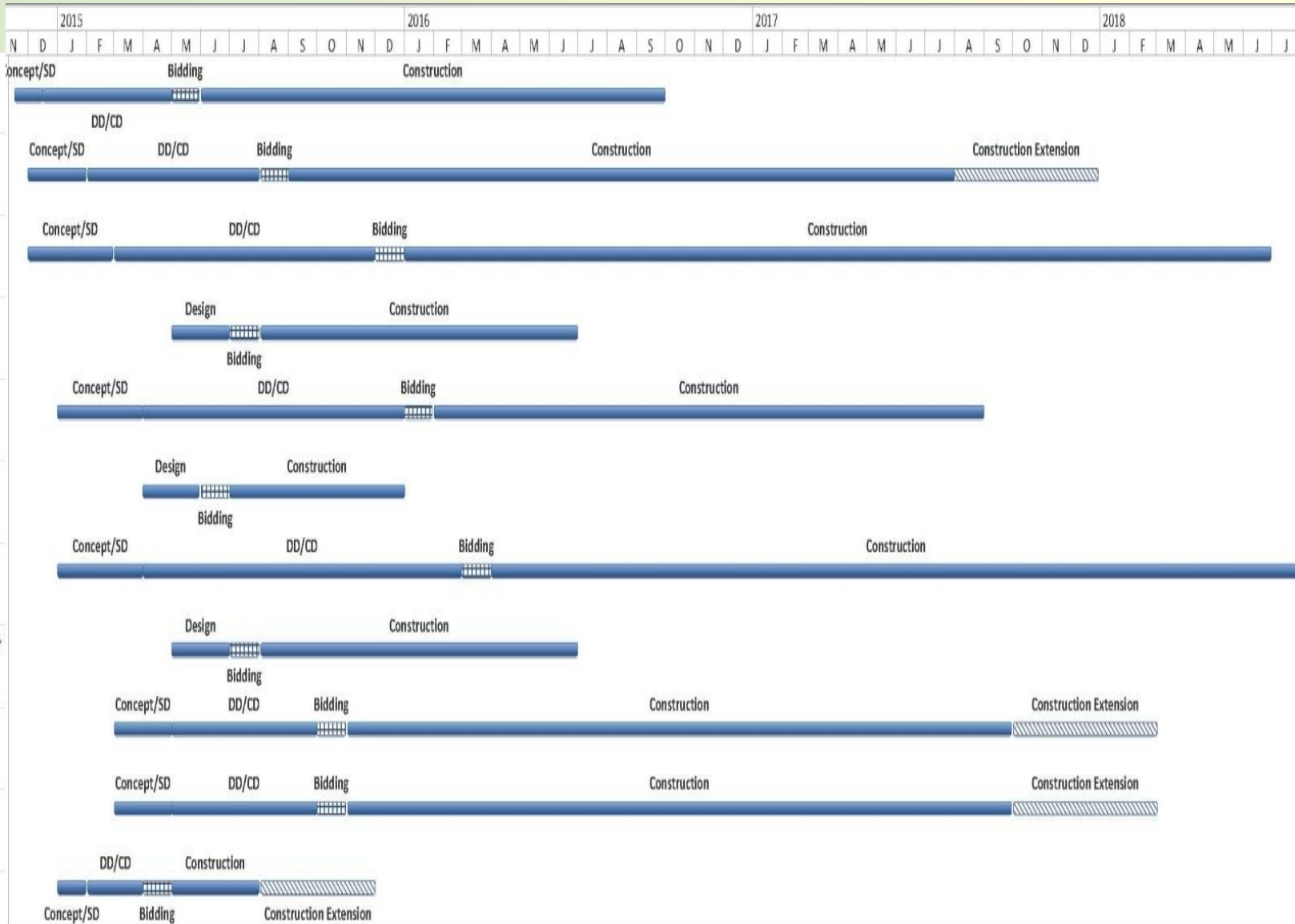


# Tasks and responsibilities

**KEY:**  
 A= Approval Authority  
 R/R= Review and Recommend  
 L= Lead Responsible Party  
 I=Provides Input

Project		School Board	District Administration	Owner's Representative	Design Team	General Contractor
<b>Closeout Phase</b>						
	Punch list Items		R/R	R/R	L	L
	Final Completion		I	I	I	L
	Close Out		I	I	L	I
	Warrantee/Guarantee Management		L	I	I	I
<b>Post Occupancy Evaluation Phase</b>						
	11 Month Walk Thru		L	L	L	I

# Timelines



# Questions?

