



FutureThink
PLAN TO EMPOWER

FINAL REPORT



Forest Hills
School District

July 16, 2025

Forest Hills School District

INTRODUCTION

FutureThink was contracted to develop enrollment projections for the Forest Hills School District.

This report contains ten-year enrollment projections, which were developed for the Forest Hills School District by analyzing the following data:

- ▶ Live birth data
- ▶ Historical enrollment
- ▶ Community school enrollment
- ▶ Open enrollment
- ▶ Community demographics
- ▶ Housing information

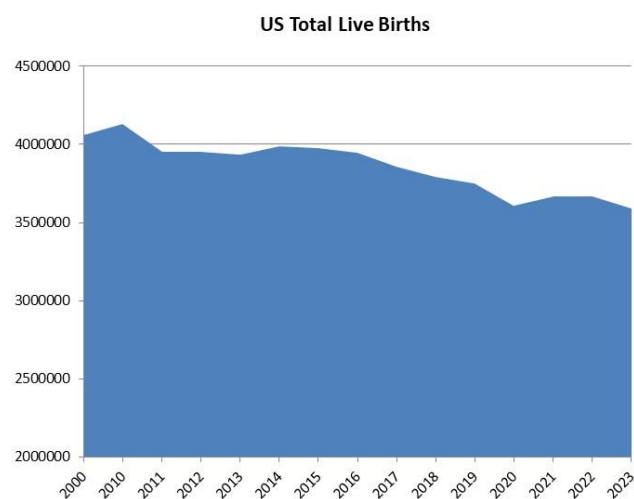
The projections presented in this report are meant to serve as a planning tool for the future and represent the most likely direction of the District.



Forest Hills School District

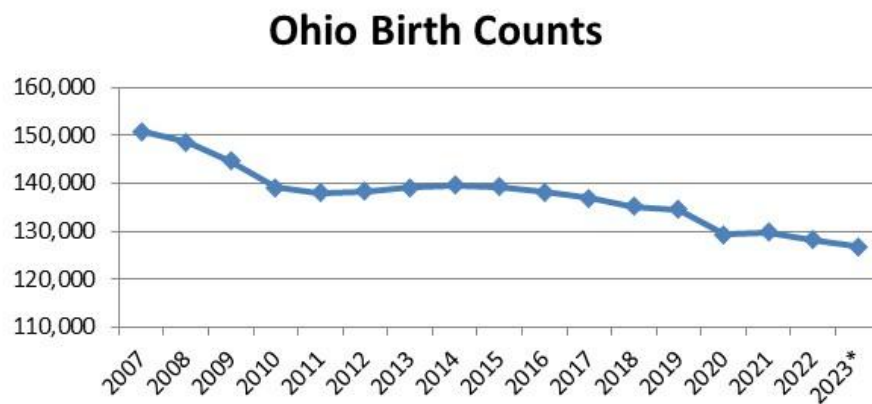
NATIONAL & OHIO TRENDS IN ENROLLMENT

The United States as a whole continues to undergo major shifts in public student enrollment. Births are a significant part of this shift. From 2000 to 2010, births increased then declined until 2014 when there was a slight uptick. Since 2014, there has been steady decline reaching an all-time low in 2020. The decrease from 2019 to 2020 was approximately 4 percent. However, in 2021, there was a slight uptick of 1.5 percent. Since, birth counts have dropped in 2022 and 2023.



Source: CDC, NVSS, National Vital Statistics Reports, Report No. 35, April 2024

From 2007 to 2011, Ohio births declined by 12,760 and then somewhat leveled off through 2014. Since 2014, births have dropped each year with a slight uptick from 2020 to 2021. From 2022 to 2023, births declined by almost 1,500 or one percent.

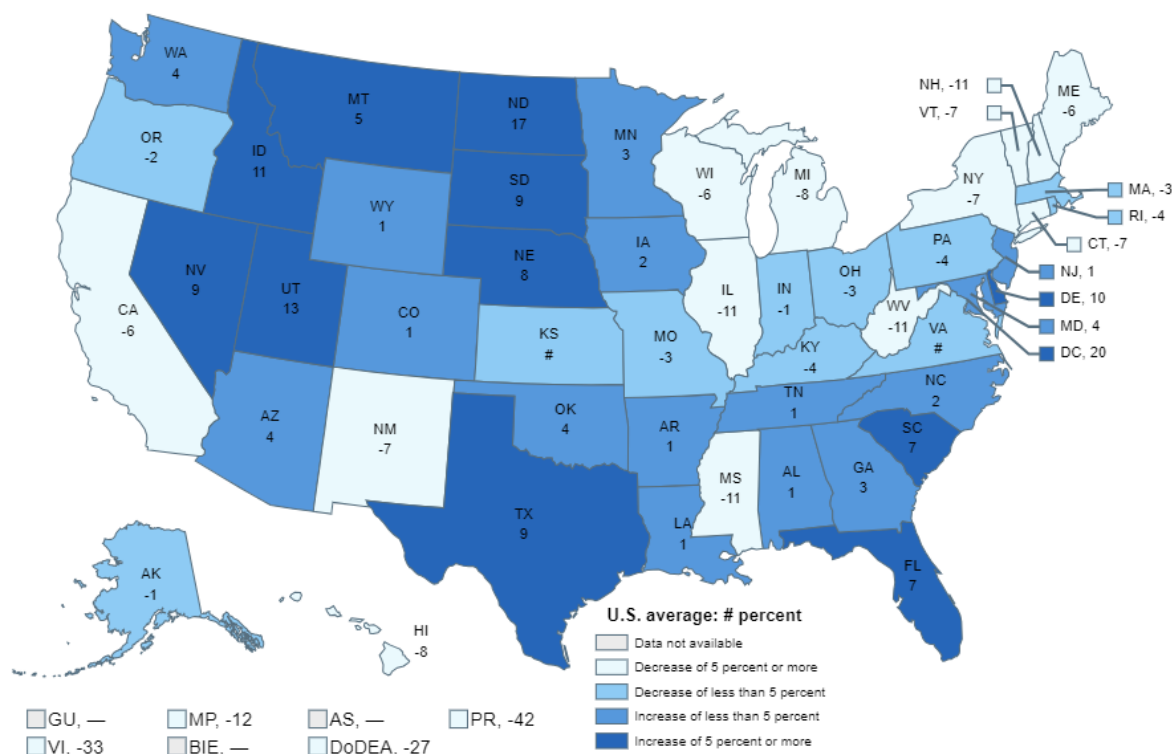


Forest Hills School District

In addition to births dropping in Ohio, the state is also aging. The median age in 2023 was 39.9 years of age while the national median age was 38.9 years. In 2010, the median age in Ohio was 38.3 years.

The figure below illustrates the change in Pre-K - 12 public school enrollment from the 2012-13 to the 2022-23 school year. States with growth in enrollment were primarily in the southeast and west. Ohio experienced a decrease of 3 percent.

Figure 2. Percentage change in public elementary and secondary school enrollment, by state or jurisdiction: Fall 2012 to fall 2022



— Not available.

Rounds to zero.

NOTE: U.S. average is for the 50 states and the District of Columbia. Data include both traditional public schools and public charter schools. Includes imputations for nonreported prekindergarten enrollment in California and Oregon for fall 2022. Figures are plotted based on unrounded data.

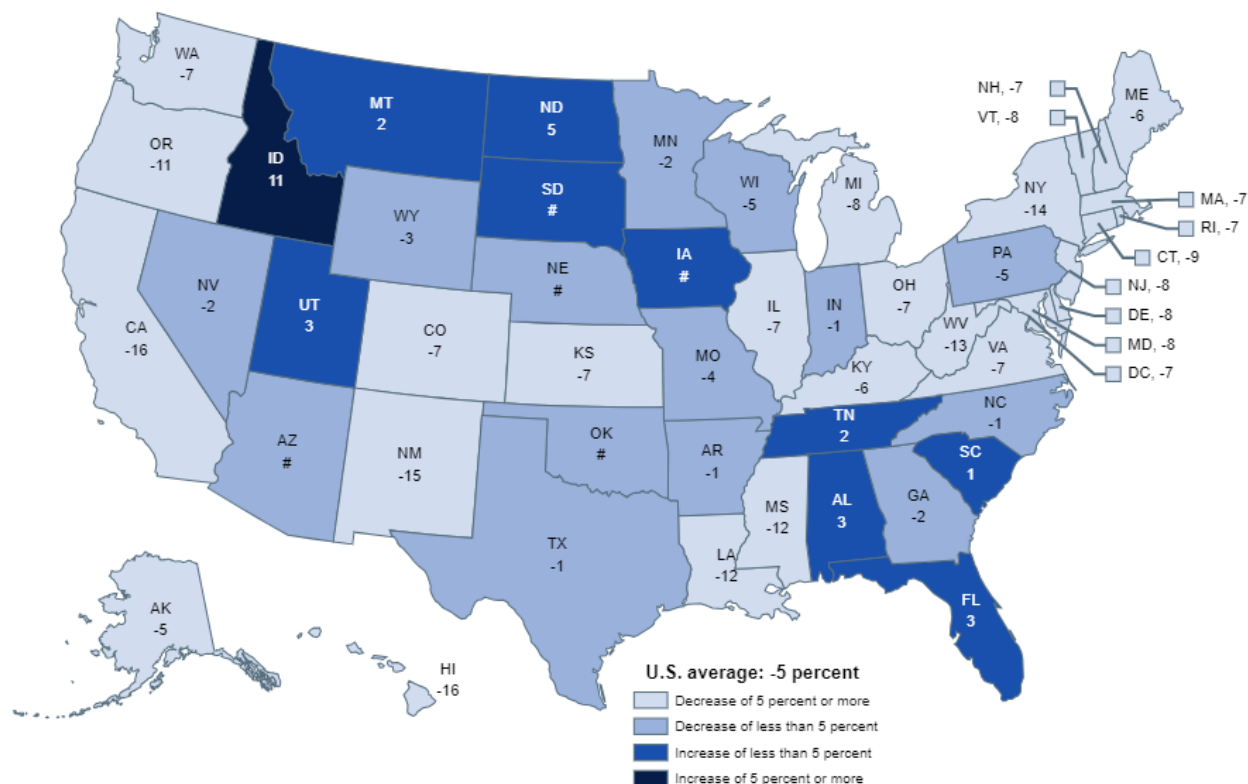
SOURCE: U.S. Department of Education, National Center for Education Statistics, Common Core of Data (CCD), "State Nonfiscal Survey of Public Elementary/Secondary Education," 2012–13 and 2022–23. Department of Defense Education Activity (DoDEA) Data Center, Enrollment Data, 2012 and 2022, retrieved December 12, 2022, from <https://www.dodea.edu/datacenter/enrollment.cfm>. See *Digest of Education Statistics 2023*, table 203.20.



Forest Hills School District

The figure below illustrates the projected change in Pre-K-12 public school enrollment from the 2022-23 to the 2031-32 school year. Growth is expected in only 10 states over this time period. Ohio is projected to experience a decrease of 7 percent.

Figure 3. Projected percentage change in public elementary and secondary school enrollment, by state: Fall 2022 to fall 2031



Rounds to zero.

NOTE: U.S. average is for the 50 states and the District of Columbia. Projected enrollment data are not available for the other U.S. jurisdictions. Data include both traditional public schools and public charter schools. Includes imputations for nonreported prekindergarten enrollment in California and Oregon for fall 2022. Projections in this figure were calculated after the onset of the coronavirus pandemic and take into account the expected impacts of the pandemic. Projections for fall 2023 through fall 2031 are based on historical data through fall 2021, only. Figures are plotted based on unrounded data.

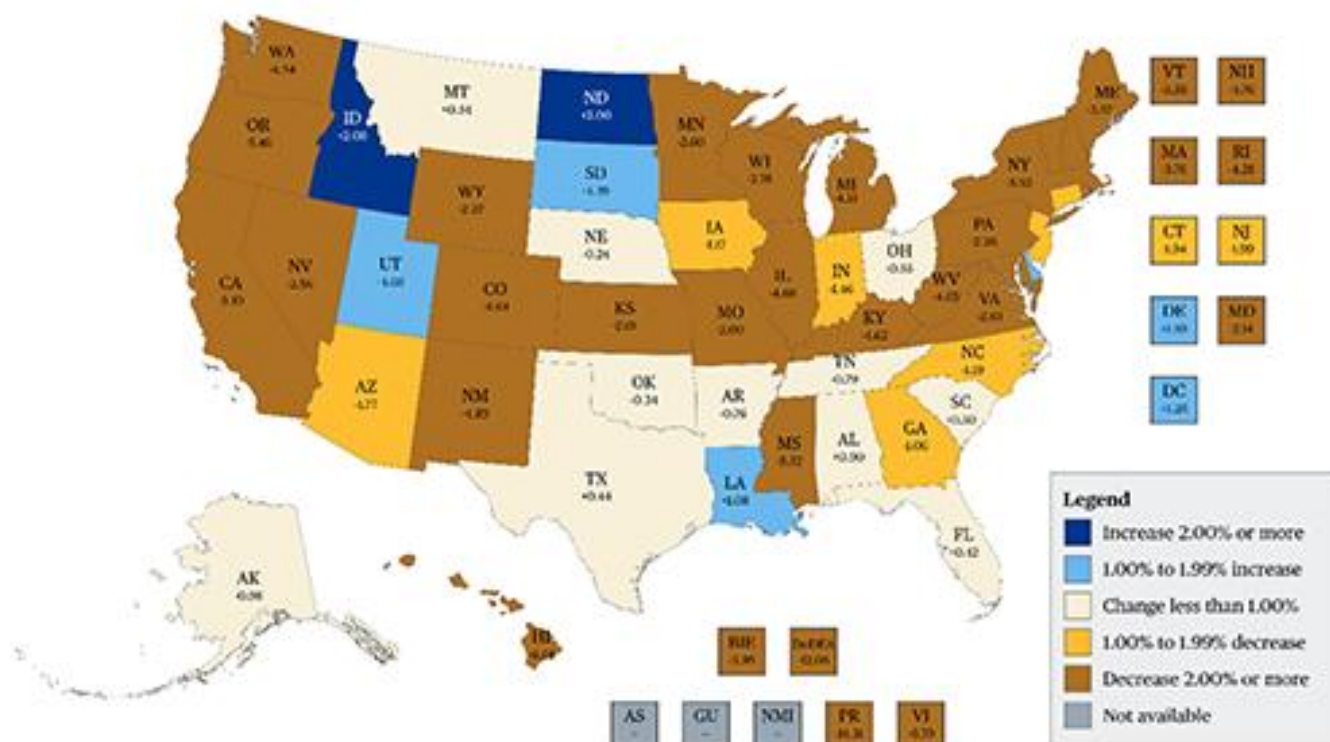
SOURCE: U.S. Department of Education, National Center for Education Statistics, Common Core of Data (CCD), "State Nonfiscal Survey of Public Elementary/Secondary Education," 2022-23; and State Public Elementary and Secondary Enrollment Projection Model, through 2031. See *Digest of Education Statistics 2023*, table 203.20.



Forest Hills School District

The figure below illustrates the change in Pre-K-12 public school enrollment from the 2019-20 to the 2022-23 school year. All but 5 states lost enrollment during the “Covid years.” Ohio lost less than 1 percent.

Figure 1. Percentage Change in Public School Enrollment Between Fall 2019 and 2022



NOTE: "Fall 2019 enrollment for California and fall 2022 enrollment for California and Oregon include imputations for non reported prekindergarten enrollment.

SOURCE: U.S. Department of Education, National Center for Education Statistics, Common Core of Data (CCD), "State Nonfiscal Survey of Public Elementary/Secondary Education," 2019-20 and 2022-23; Department of Defense Education Activity (DoDEA) Data Center, Enrollment Data, fall 2019 and fall 2022, retrieved December 12, 2022, from <https://dodea.edu/education/research-accountability-and-evaluation/enrollment-management>.

Forest Hills School District

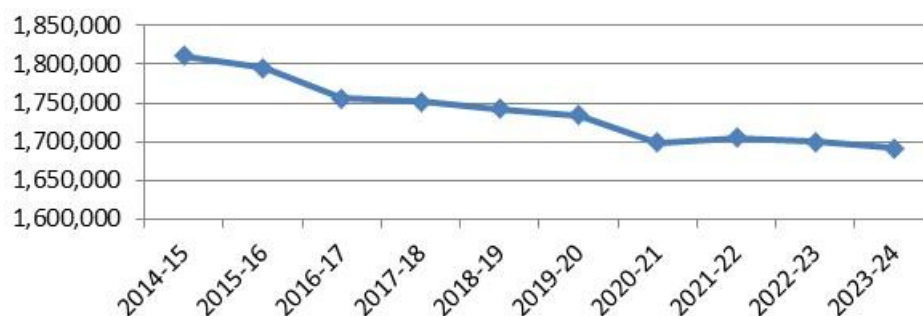
From 2014-15 to 2023-24, public school enrollment declined by 118,851 students or approximately 7% statewide. In 2021-22, there was a slight uptick of 5,810 or less than 0.5 percent.

Ohio Public School Enrollment**2014-15 - 2023-24**

Year	October Headcount*
2014-15	1,810,577
2015-16	1,795,339
2016-17	1,755,552
2017-18	1,751,888
2018-19	1,742,715
2019-20	1,733,911
2020-21	1,698,925
2021-22	1,704,735
2022-23	1,699,957
2023-24	1,691,726

Source: Ohio Department of Education

*includes grades K-12 and ungraded

Ohio Public School Enrollment

Forest Hills School District

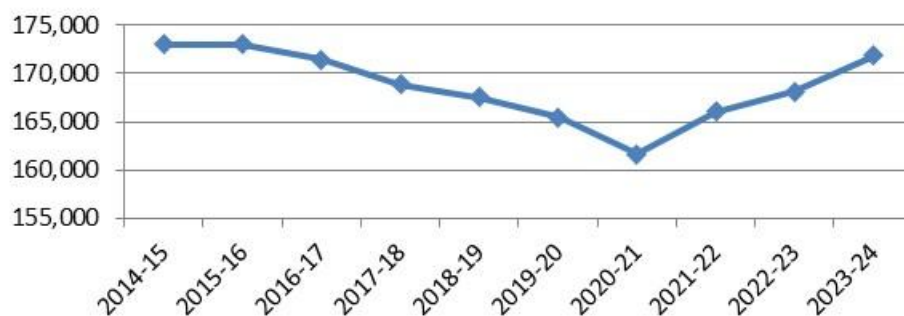
From 2014-15 to 2020-21, non-public school enrollment declined by 12,302 students or approximately 7 percent. However, enrollment has increased each year since 2021-22. From 2020-21 to 2023-24, non-public school enrollment has increased by over 10,000 students or approximately 6 percent.

Ohio Chartered Non-Public School Enrollment**2014-15 - 2023-24**

Year	October ADM*
2014-15	173,030
2015-16	172,990
2016-17	171,426
2017-18	168,857
2018-19	167,558
2019-20	165,511
2020-21	161,664
2021-22	166,013
2022-23	168,111
2023-24	171,830

Source: Ohio Department of Education

*includes grades K-12

Ohio Non-Public School Enrollment

Forest Hills School District

Out of 607 school districts, only 92 (or approximately 15%) gained enrollment in grades K - 12 from the 2014-15 to 2024-25 school year. Please note 5 districts had either 0 students in 2014-15 or in 2024-25 and were not included in the count.

Of the 515 school districts who lost enrollment, 58 (or approximately 13%) lost less than 5 percent, and 118 districts (or approximately 23%) lost between 5 and 10 percent. Approximately 33% (or 172 districts) lost between 11 and 20 percent, and approximately 32% (or 167 districts) lost more than 20 percent.

Of those districts that gained enrollment, 39 (or approximately 42%) increased by less than 5 percent, and 22 (or approximately 24%) increased between 5 and 10 percent. Twenty-three districts (or approximately 25%) increased between 10 and 20%, and 8 districts (or approximately 9%) increased over 20 percent.

Analyzing enrollment from a county perspective, only 10 of the 88 counties in Ohio gained K – 12 enrollment from the 2014-15 to the 2024-25 school year. Delaware County gained approximately 17%, while the rest gained approximately 5% or less.

County	2024-25 K-12 Total	2015-16 K-12 Total	Difference	% Change
Delaware	35,030	30,023	5,007	16.7%
Seneca	6,493	6,170	323	5.2%
Licking	27,264	25,977	1,287	5.0%
Fairfield	25,361	24,251	1,110	4.6%
Union	7,881	7,679	202	2.6%
Mercer	7,951	7,754	197	2.5%
Warren	36,645	35,942	703	2.0%
Pickaway	9,234	9,104	130	1.4%
Franklin	169,025	167,801	1,224	0.7%
Madison	6,450	6,438	12	0.2%

Clinton County had the highest percentage loss of students at 25 percent. Fifty-six percent of the counties (49 total) experienced a decline of greater than 10 percent. The map on the following page illustrates the gain/loss for each county from the 2014-15 to the 2024-25 school year.



ENROLLMENT PROJECTION METHODOLOGIES

When projecting future enrollments, it is vital to track the number of births, the patterns of enrollment, the amount of new housing activity, and the change in household composition.

In addition, any of the following factors could cause a significant change in projected student enrollments:

- ▶ Boundary adjustments
- ▶ New school openings
- ▶ Changes/additions in program offerings
- ▶ Preschool programs
- ▶ Change in grade configuration
- ▶ Interest rates/unemployment shifts
- ▶ Magnet/charter/private school opening or closure
- ▶ Zoning changes
- ▶ Unplanned new housing activity
- ▶ Planned, but not built, housing

Obviously, certain factors can be gauged and planned for far better than others. For instance, it may be relatively straightforward to gather housing data from local builders regarding the total number of lots in a planned subdivision and calculate the potential student yield. However, planning for changes in the unemployment rate, and how these may either boost or reduce public school enrollment, proves more difficult. In any case, it is essential to gather a wide variety of information in preparation for producing enrollment projections.

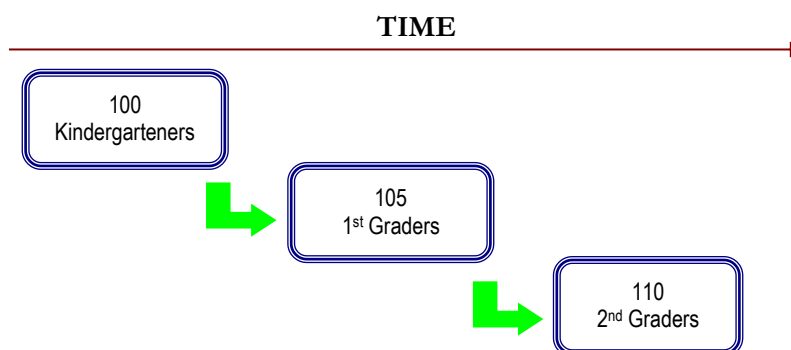
When looking ahead at a school district's enrollment over the next two, five, or ten years, it is helpful to approach the process from a global perspective. For example: How many new homes have been constructed each year? How many births have occurred each year in relation to the resident population? Is housing experiencing a turnover – if so, what is the composition of families moving in/out? Are more or less students attending private school or being home-schooled? What new educational policies are in place now that could affect student enrollment figures?

The data sets generated from questions such as these have led to the development of general methodologies to project future student enrollments. They are as follows:

Forest Hills School District

Cohort Survival Method

A cohort is a group of persons [in this case, students]. The cohort survival projection methodology uses previous live birth data and historical student enrollments to “age” a known population or cohort throughout the school grades. For instance, a cohort begins when a group of kindergarteners enrolls in grade K and moves to first grade the following year, second grade the next year, and so on.



A “survival ratio” is developed to track how this group of students grew or shrunk in number as they moved through the grade levels. By determining survival ratios for each grade transition [i.e., 1st to 2nd grade] over a ten-year period of time, patterns emerge and projection ratios can be developed to be used as a multiplier.

For example, if student enrollment has consistently increased from the 8th to the 9th grade over the past ten years, the survival ratios for each year would be greater than 100 percent. Through analysis of the survival ratios, the projection ratio is determined and is multiplied by the current 8th grade to develop a projection for next year’s 9th grade.

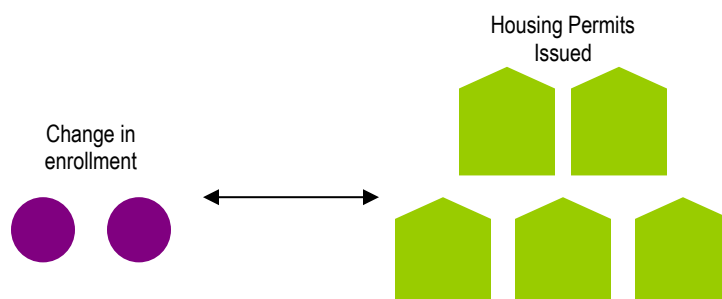
This methodology can be carried through to develop ten years of projection figures. Because there is not a grade cohort to follow for students coming into kindergarten, live birth counts are used to develop a survival ratio. Babies born five years previous to the kindergarten class are compared in number, and a ratio can be developed to project future kindergarten enrollments.

The cohort survival method is useful in areas where population is stable [relatively flat, growing steadily, or declining steadily], and where there have been no significant fluctuations in enrollment, births, and housing patterns from year to year.

Forest Hills School District

Housing

Enrollment projections can also be determined by analyzing the housing data for the areas that make up a school district. Yield factors can be established by comparing the historic change in enrollment from year to year divided by the total number of building or occupancy permits issued. For example, if student enrollment has increased by approximately 100 students each year and approximately 200 building permits have been issued each year for the past ten years, then the yield factor would be approximately .5 students per building permit.



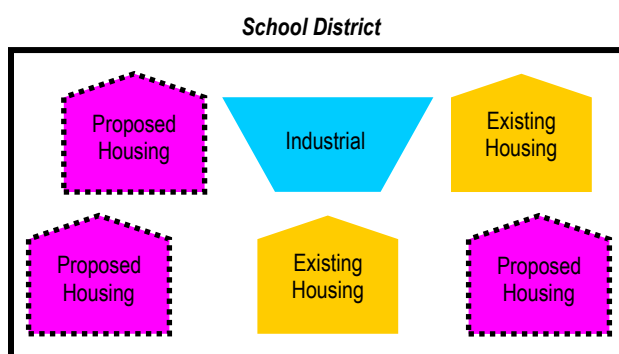
Once yield factors are established, the number of new students per year can be estimated by multiplying the yield factor by the number of projected new housing units. This method is effective when the rate of kindergarten enrollment far exceeds the live birth counts.

If housing demolitions are occurring in a district, these must also be taken into account. For instance, if housing demolitions/withdrawals have increased rapidly over recent years while new housing starts have remained relatively constant over many years, the conclusion may be that some of the new housing starts will simply be replacements for the families displaced by the demolitions. Of course, housing value and household composition would need to be further analyzed to confirm that this is indeed the case. It is possible that enrollment may remain flat or decline even though there is new housing occurring in the area.

Forest Hills School District

Land-Saturation Analysis

Housing data also drives the land-saturation analysis enrollment methodology. In areas where there is a high rate of development and the future development patterns in the area are clear, a “build-out” scenario can be developed. The scenario takes into consideration the remaining acreage to be developed, planned rate of completion, zoning policies, density per acre, type of housing, and ratios of school-age children per household type. This method is particularly useful in areas experiencing rapid growth.



Geographic Information Systems

While not a methodology, the need for better tools and easier manipulation of data has led to a new industry standard in planning – GIS [Geographic Information Systems]. GIS technology allows school districts to quickly analyze countless data sets including birth data, housing information, and enrollment statistics.

When paired with enrollment projections, GIS becomes an invaluable information-management and decision-making tool. Often, county or city offices are already implementing GIS technology and data can be shared and expanded among these organizations in the district. GIS tables and maps are included within this report illustrating population, age, and income estimates and projections.

A combination of the cohort survival and housing methods were used in the development of the enrollment projections for the Forest Hills School District.

Forest Hills School District

HISTORICAL ENROLLMENT

Over the past ten years, student enrollment in the Forest Hills School District has decreased by 595 students in grades Pre-K – 12, including grade 13 and 23 students. Total enrollment for the 2024-25 school year is 6,822 students.

The following tables and graph illustrate the District's enrollment history from 2015-16 through 2024-25.

**Forest Hills School District
Historical Enrollment**

Grade	2015-16	2016-17	2017-18	2018-19	2019-20	2020-21	2021-22	2022-23	2023-24	2024-25
Pre-K	138	144	168	165	176	148	188	220	221	190
K	435	433	518	465	494	473	497	435	454	426
1	504	503	513	536	493	510	512	518	455	466
2	565	502	528	523	535	502	514	515	507	466
3	511	568	533	525	532	537	515	511	517	514
4	531	522	575	527	539	549	538	516	507	516
5	551	557	539	579	526	542	562	535	514	515
6	605	562	563	538	584	542	538	550	543	517
7	618	610	582	574	549	617	532	533	552	527
8	572	619	602	574	580	554	616	535	535	561
9	620	580	628	609	593	571	576	597	511	542
10	665	615	574	626	604	590	568	574	600	506
11	531	626	567	542	595	572	557	523	529	548
12	552	577	640	557	529	566	585	533	502	516
Pre-K - 12 Total	7,398	7,418	7,530	7,340	7,329	7,273	7,298	7,095	6,947	6,810
13/23	19	19	11	14	16	17	13	18	15	12
Grand Total	7,417	7,437	7,541	7,354	7,345	7,290	7,311	7,113	6,962	6,822

Source: Forest Hills School District; Headcount

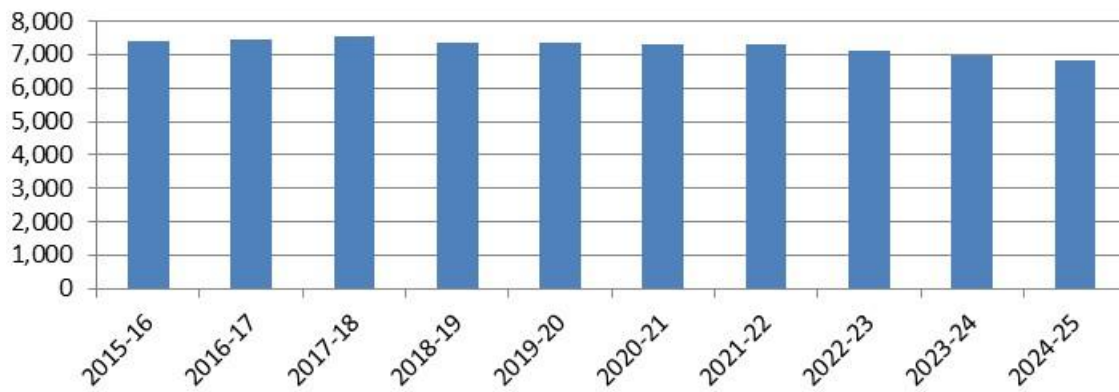
**Forest Hills School District
Historical Enrollment by Grade Group**

Grade	2015-16	2016-17	2017-18	2018-19	2019-20	2020-21	2021-22	2022-23	2023-24	2024-25
Pre-K - 6	3,840	3,791	3,937	3,858	3,879	3,803	3,864	3,800	3,718	3,610
7 - 8	1,190	1,229	1,184	1,148	1,129	1,171	1,148	1,068	1,087	1,088
9 - 12	2,368	2,398	2,409	2,334	2,321	2,299	2,286	2,227	2,142	2,112
Pre-K - 12 Total	7,398	7,418	7,530	7,340	7,329	7,273	7,298	7,095	6,947	6,810
13/23	19	19	11	14	16	17	13	18	15	12
Grand Total	7,417	7,437	7,541	7,354	7,345	7,290	7,311	7,113	6,962	6,822

Source: Forest Hills School District; Headcount

Forest Hills School District

**Forest Hills School District
Historical Enrollment**



Forest Hills School District

COMMUNITY SCHOOL ENROLLMENT

From 2013-14 to 2022-23, community school enrollment decreased by approximately 8% from 120,893 students in 395 community schools to 112,238 students in 334 community schools. However, there was an increase of 11% in enrollment from the 2019-20 to the 2020-21 school year. Enrollment declined by over 2,000 students from 2020-21 to 2021-22, but the number of community schools increased to 324.

State of Ohio

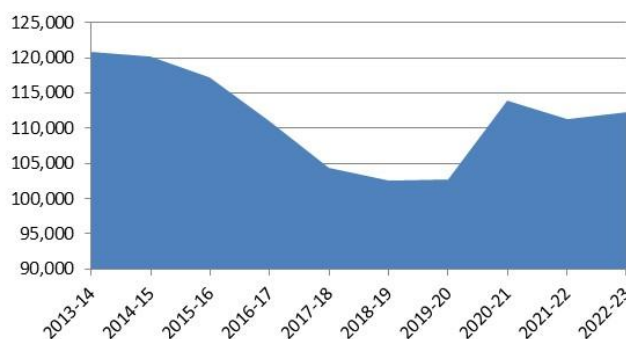
Community School Enrollment (Pre-K - 12)

Grade	2013-14	2014-15	2015-16	2016-17	2017-18	2018-19	2019-20	2020-21	2021-22	2022-23
Grand Total	120,893	120,200	117,282	110,961	104,380	102,563	102,654	113,900	111,370	112,238

Source: Ohio Department of Education, Ohio Community Schools Annual Report 2022-23

FTE students

Ohio Community School Enrollment



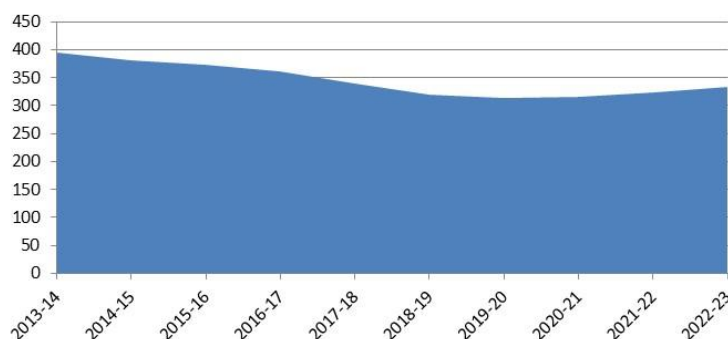
State of Ohio

Number of Community Schools

Grade	2013-14	2014-15	2015-16	2016-17	2017-18	2018-19	2019-20	2020-21	2021-22	2022-23
Grand Total	395	381	373	362	340	320	313	315	324	334

Source: Ohio Department of Education, Ohio Community Schools Annual Report 2022-23

Number of Community Schools in Ohio



Forest Hills School District

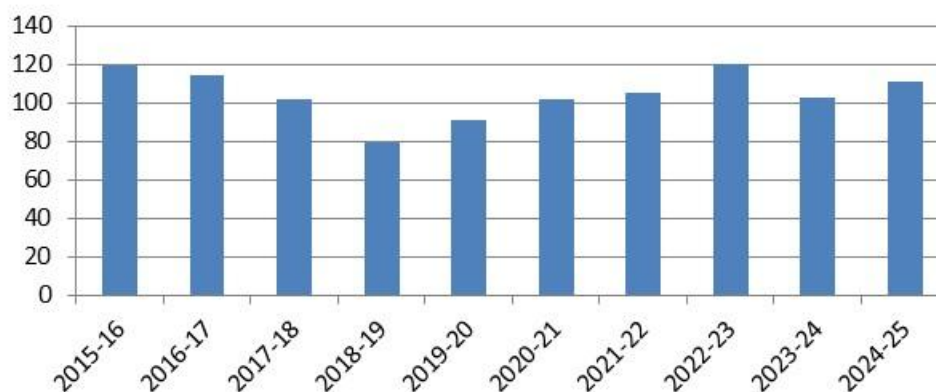
Since 2015-16, the number of Forest Hills School District students attending community schools has fluctuated between 79 and 120 students. Enrollment of Forest Hills School District students attending community schools should be closely monitored as it may have a significant impact on District enrollment in the future.

**Forest Hills School District
Community School Enrollment**

Grade	2015-16	2016-17	2017-18	2018-19	2019-20	2020-21	2021-22	2022-23	2023-24	2024-25
Grand Total	119	114	102	79	91	102	105	120	103	111

Forest Hills School District; ODDEX

**Forest Hills School District
Students Attending Community Schools**



Forest Hills School District

OPEN ENROLLMENT

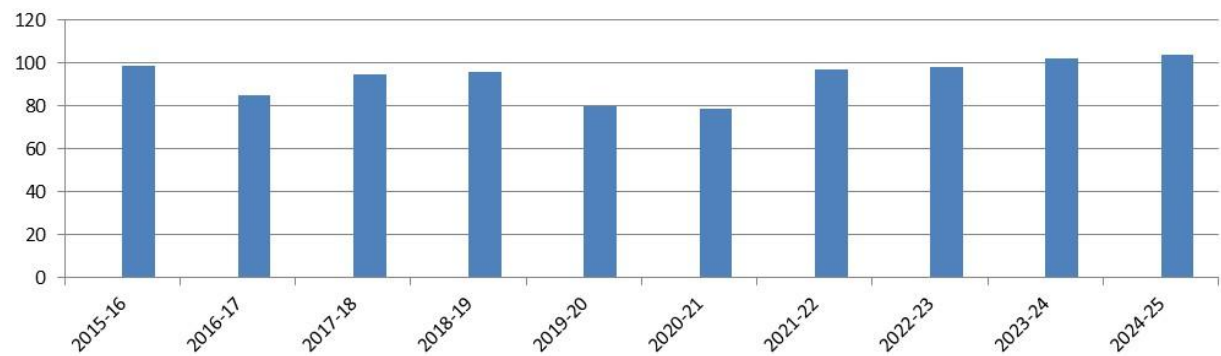
Since 2015-16, the number of Forest Hills School District students “open enrolling” out of the District has increased from 99 to 104 students with some fluctuation. Significant changes in the number of students “open enrolling” into or out of the District from year to year can impact enrollment projections and should be monitored.

Forest Hills School District
Open Enrollment - OUT

Grade	2015-16	2016-17	2017-18	2018-19	2019-20	2020-21	2021-22	2022-23	2023-24	2024-25
Grand Total	99	85	95	96	80	79	97	98	102	104

Source: Forest Hills School District; Headcount

Forest Hills School District
Open Enrollment - Out



Forest Hills School District

HOME SCHOOL ENROLLMENT

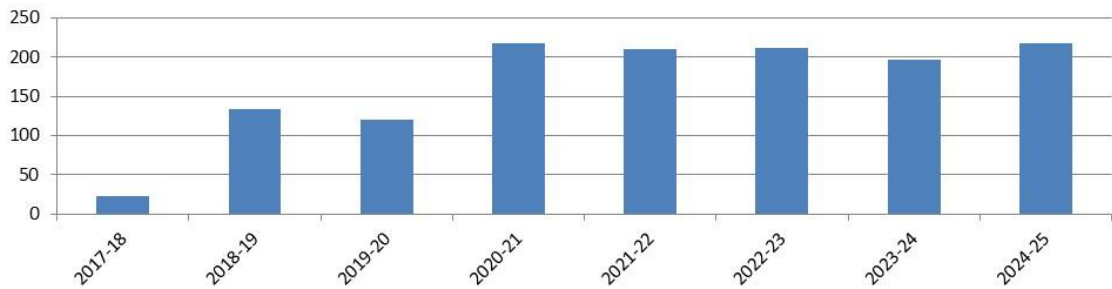
Since 2017-18, the number of Forest Hills School District students “home-schooled” in the District has increased from 23 to 218 students with some fluctuation.

Forest Hills School District
Home Schooled Students

Grade	2017-18	2018-19	2019-20	2020-21	2021-22	2022-23	2023-24	2024-25
K-12	23	133	120	217	210	211	196	218

Source: Washington Post <https://www.washingtonpost.com/education/interactive/2023/homeschooling-growth-data-by-district/>;
Forest Hills School District

Forest Hills School District
Home Schooled Students



Forest Hills School District

LIVE BIRTH DATA

Utilization of live birth data is recommended when projecting future kindergarten enrollments as it provides a helpful overall trend. The live birth counts are used in determining a birth-to-kindergarten survival ratio. This ratio identifies the percentage of children born in a representative area who attend kindergarten in the District five years later. The survival ratios for birth-to-kindergarten as well as grades 1-12 can be found later in this report.

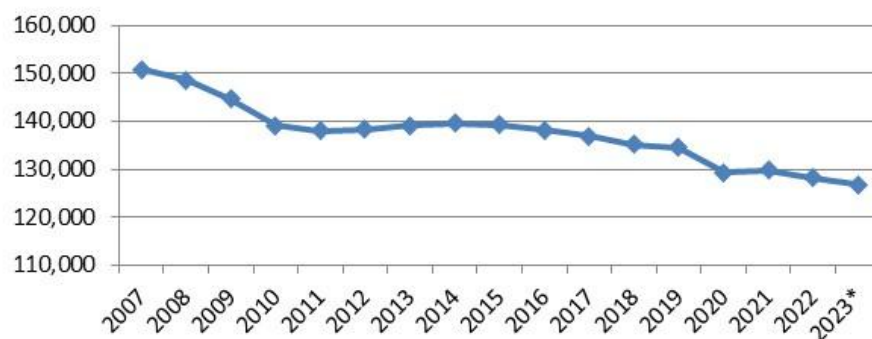
The Ohio Department of Health [ODH] information warehouse provides information about live birth events for Ohio residents. Information about events occurring outside of Ohio to Ohio residents is included. Information about events occurring inside Ohio to non-Ohio residents is not included.

Data is arranged by the residence of the mother. For example, if a mother lives in Powell, Delaware County but delivers her baby in Columbus, Franklin County, the birth is counted in Powell, Delaware County.

Live birth counts are different from live birth rates. The live birth count is the actual number of live births. A birth rate is the number of births per 1,000 women in a specified population group. Birth rates are provided for counties only and for 9 age groups from 10-14 years to 45+ years.

From 2007 to 2011, Ohio births declined by 12,760 and then somewhat leveled off through 2014. Since 2014, births have dropped each year with a slight uptick from 2020 to 2021. From 2022 to 2023, births declined by almost 1,500 or one percent.

Ohio Birth Counts



Forest Hills School District

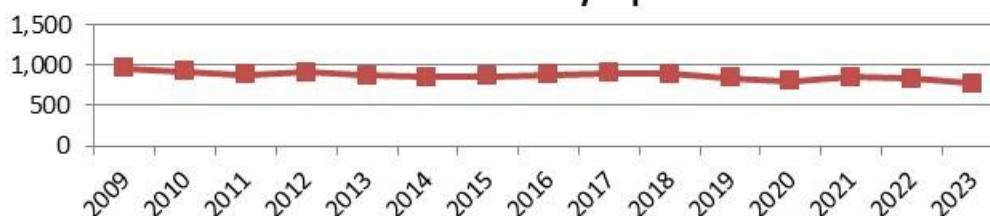
The following table and graph include the live birth counts for zip codes 45230, 45244, and 45255.

**Forest Hills School District
Live Birth Counts by Zip Code
2009-2023**

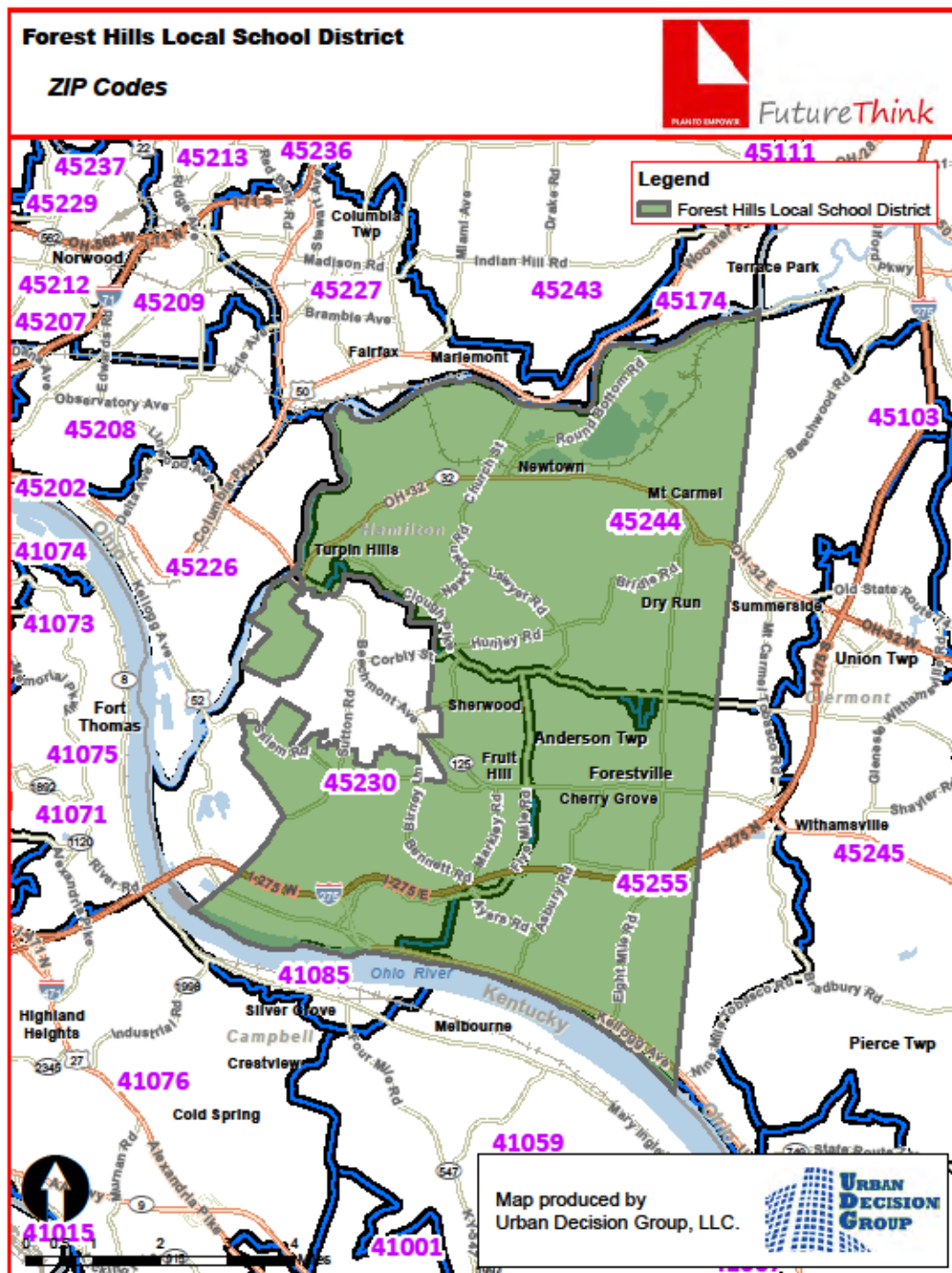
Year	45230	45244	45255	Total
2009	375	347	244	966
2010	343	326	251	920
2011	332	337	215	884
2012	369	319	224	912
2013	361	307	206	874
2014	329	318	210	857
2015	333	310	217	860
2016	339	318	228	885
2017	370	306	226	902
2018	341	325	222	888
2019	324	303	215	842
2020	333	278	195	806
2021	316	294	245	855
2022	336	276	221	833
2023	302	272	200	774

Source: Ohio Department of Health, Data Warehouse

**Forest Hills School District
Live Birth Counts by Zip Code**



Forest Hills School District



Forest Hills School District

DEMOGRAPHICS

The Forest Hills School District is comprised of Anderson Township and Newtown Village in Hamilton County. General demographic data is included in the following tables for the areas located completely or partially in the District.

General Demographic Information

	Hamilton County	State of Ohio
Per Capita Income	\$44,328	\$39,455
Median Household Income	\$70,816	\$69,680
Persons Below Poverty	14.9%	13.2%

Source: US Census, American Community Survey, 2023 5-Year Estimates

Total Population

	2010 Census	2020 Census
Hamilton County	802,374	830,639
Anderson Township	43,446	44,088
Newtown Village	2,672	2,702

Source: 2010: DEC Summary File 2; 2020 Decennial Census

Also included are block group estimates and projections provided by Esri. Esri uses a time series of estimates from the U.S. Census Bureau that includes the latest estimates and inter-censal estimates adjusted for error of closure. The Census Bureau's time series is consistent, but testing has revealed improved accuracy by using a variety of sources to track county population trends.

Esri also employs a time series of building permits and housing starts plus residential deliveries. Data sources are integrated and then analyzed by Census Block Groups.

Sources of data include:

- ▶ Supplementary Surveys of the Census Bureau
- ▶ Bureau of Labor Statistics' (BLS) Local Area Unemployment Statistics
- ▶ BLS Occupational Employment Statistics
- ▶ InfoUSA
- ▶ U.S. Bureau of the Census' Current Population Survey
- ▶ National Planning Association Data Service

Forest Hills School District

Below is a list of definitions as they appear on the U.S. Census Bureau website, to aid in interpretation of the following tables and maps.

Household:

A household includes all the people who occupy a housing unit as their usual place of residence.

Average family size:

A measure obtained by dividing the number of members of families by the total number of families (or family householders).

Family household (Family):

A family includes a householder and one or more people living in the same household who are related to the householder by birth, marriage, or adoption. All people who are related to the householder are regarded as members of his or her family. A family household may contain people not related to the householder, but those people are not included as part of the householder's family in census tabulations. Thus, the number of family households is equal to the number of families, but family households may include more members than do families. A household can contain only one family for purposes of census tabulations. Not all households contain families since a household may comprise a group of unrelated people or one person living alone.

Householder:

The person, or one of the people, in whose name the home is owned, being bought, or rented. If there is no such person present, any household member 15 years old and over can serve as the householder for the purposes of the census. Two types of householders are distinguished: a family householder and a nonfamily householder. A family householder is a householder living with one or more people related to him or her by birth, marriage, or adoption. The householder and all people in the household related to him are family members. A nonfamily householder is a householder living alone or with nonrelatives only.

Forest Hills School District

The following tables illustrate the current estimates and 5-year population projections based on block groups that comprise the state and school district, indicating areas of current and projected growth. The tables have been developed to determine selected age group projections and projections for household income, family size, and total households.

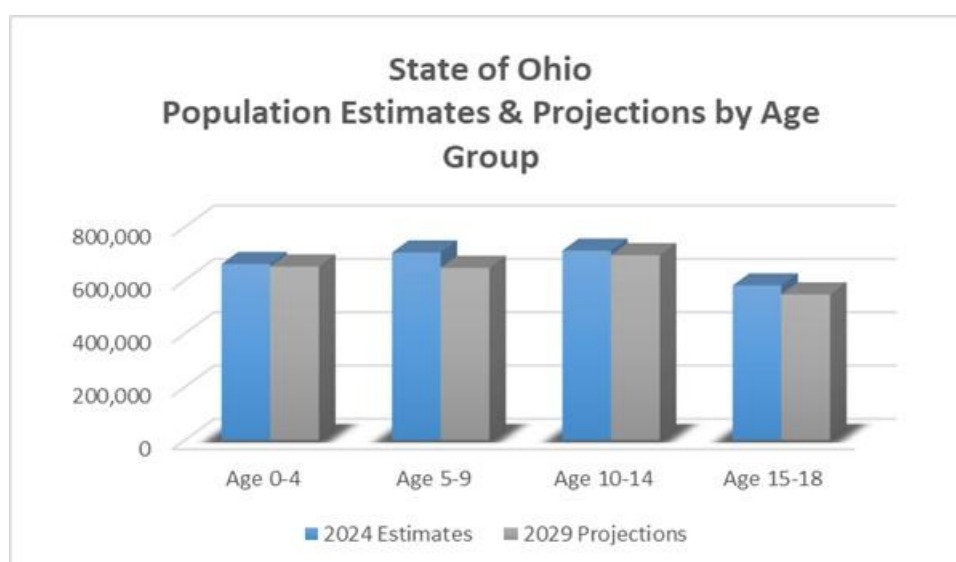
The total population in the State of Ohio is 11,827,616. This population is projected to increase by 10,670 people, or less than 1% over a 5-year period.

The 0-18-year-old population in the State currently totals 2,655,144. This population is projected to decrease by 118,007 children, or approximately 4 percent.

The median age is projected to increase by 2.5% from 40.2 to 41.2 years of age.

State of Ohio	2024 Estimates	2029 Projections	Change 2024-29	Change 2024-29 (%)
Total Population	11,827,616	11,838,286	10,670	0.1%
Age 0-4	660,554	651,085	-9,469	-1.4%
Age 5-9	703,559	645,953	-57,606	-8.2%
Age 10-14	710,806	693,306	-17,500	-2.5%
Age 15-18	580,225	546,793	-33,432	-5.8%
Total Age 0-18	2,655,144	2,537,137	-118,007	-4.4%
Median Age	40.2	41.2	1.0	2.5%

Source: Esri

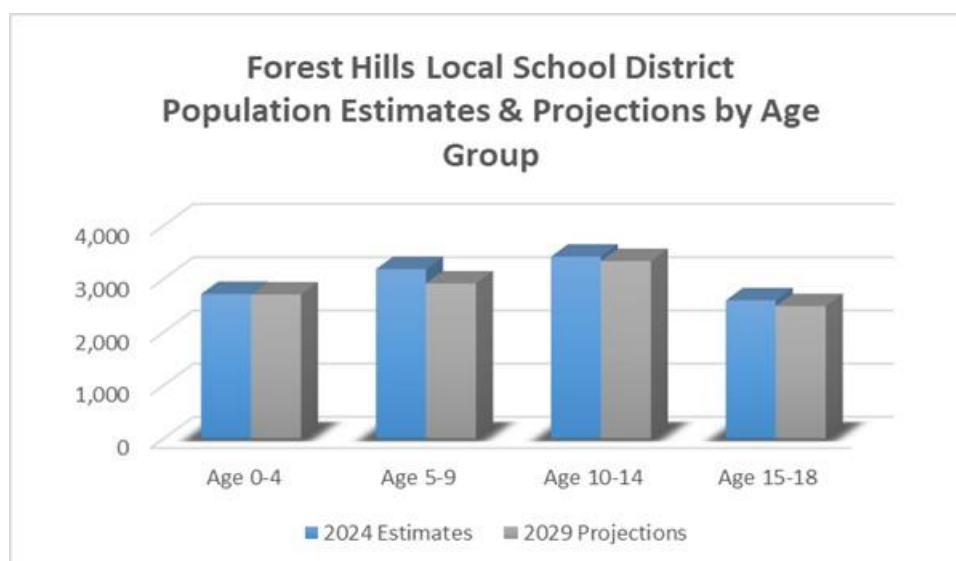


Forest Hills School District

The total population in the District is 46,679. This population is projected to increase by 493 people, or approximately 1% over a 5-year period. The 0-18-year-old population in the District currently totals 11,920. This population is projected to decrease by 469 people, or approximately 4 percent. The median age is projected to increase by approximately 2%, from 41.2 to 42.0 years of age.

Forest Hills Local School District	2024 Estimates	2029 Projections	Change 2024-29	Change 2024-29 (%)
Total Population	46,679	47,172	493	1.1%
Age 0-4	2,718	2,710	-8	-0.3%
Age 5-9	3,185	2,915	-270	-8.5%
Age 10-14	3,419	3,336	-83	-2.4%
Age 15-18	2,598	2,490	-108	-4.2%
Total Age 0-18	11,920	11,451	-469	-3.9%
Median Age	41.2	42.0	0.8	1.9%

Source: Esri



Forest Hills School District

Median and average household incomes in the State are both projected to increase by approximately 16% over a 5-year period. The average family size is projected to decrease by approximately 1%, and the total number of family households is projected to increase by less than 1 percent.

State of Ohio	2024 Estimates	2029 Projections	Change 2024-29	Change 2024-29 (%)
Median Household Income	\$69,192	\$80,521	\$11,329	16.4%
Average Household Income	\$97,114	\$112,947	\$15,833	16.3%
Average Family Size	3.04	3.02	-0.02	-0.7%
Total Family Households	2,950,263	2,956,571	6,308	0.2%

Source: Esri

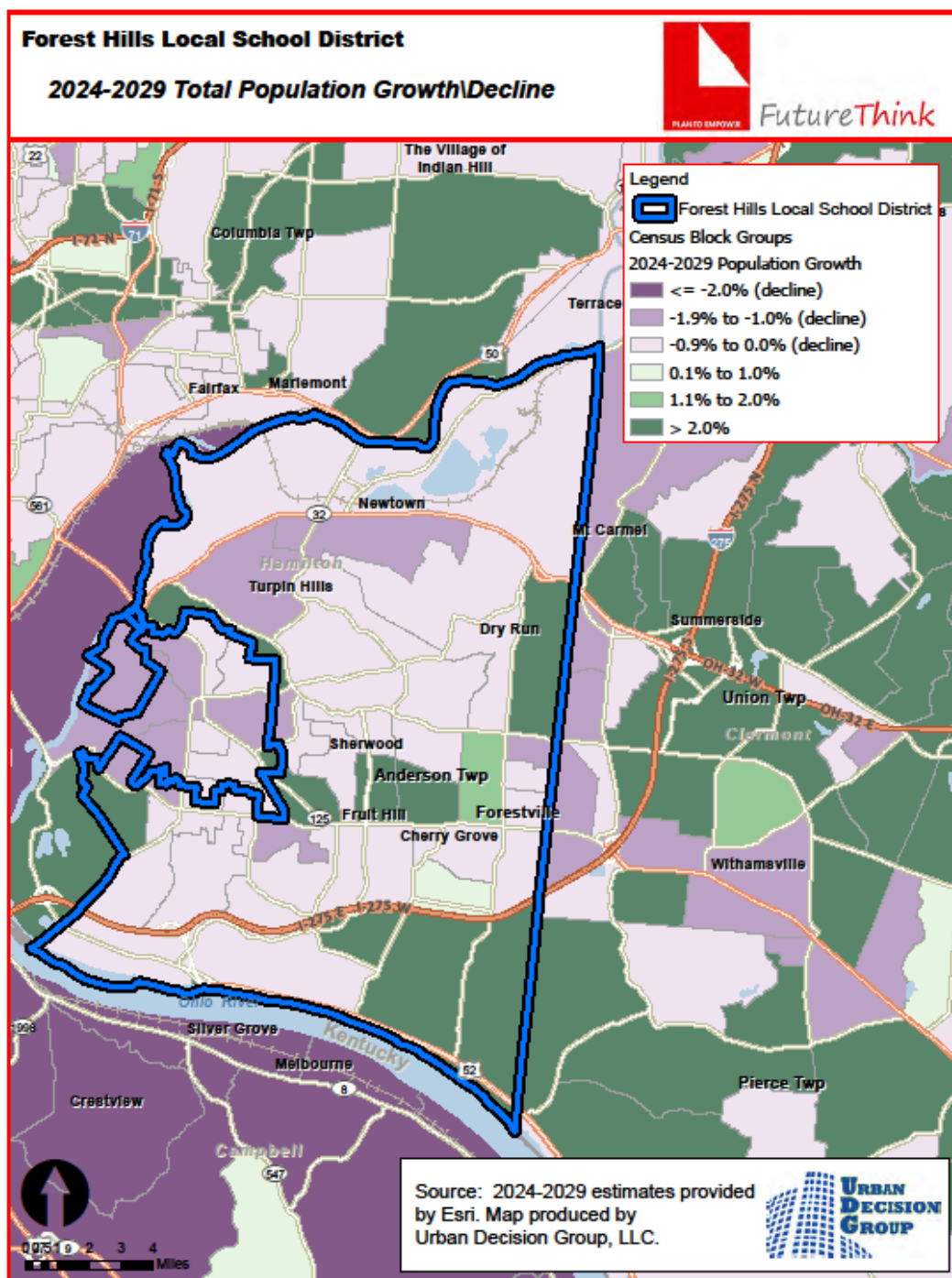
Median and average household incomes in the District are projected to increase by approximately 23% and 15%, respectively over a 5-year period. The average family size is projected to increase by approximately 1%, and the total number of family households is projected to decrease slightly.

Forest Hills Local School District	2024 Estimates	2029 Projections	Change 2024-29	Change 2024-29 (%)
Median Household Income	\$117,881	\$144,807	\$26,926	22.8%
Average Household Income	\$159,456	\$184,019	\$24,563	15.4%
Average Family Size	3.19	3.22	0.03	0.9%
Total Family Households	12,612	12,576	-36	-0.3%

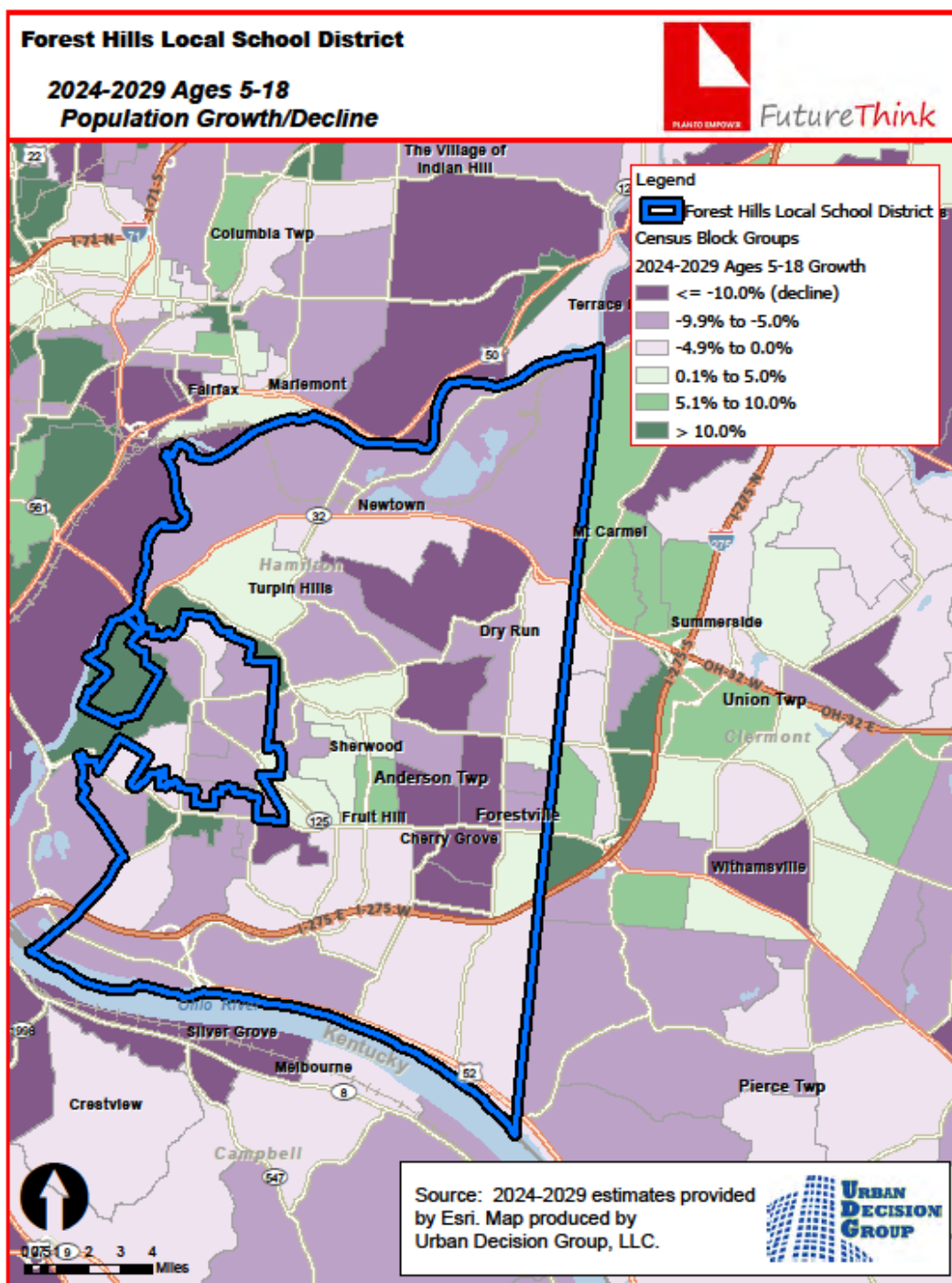
Source: Esri

The maps on the following pages illustrate the data identified in the tables. The color coding identifies areas within the District that may be increasing or decreasing at different rates than others.

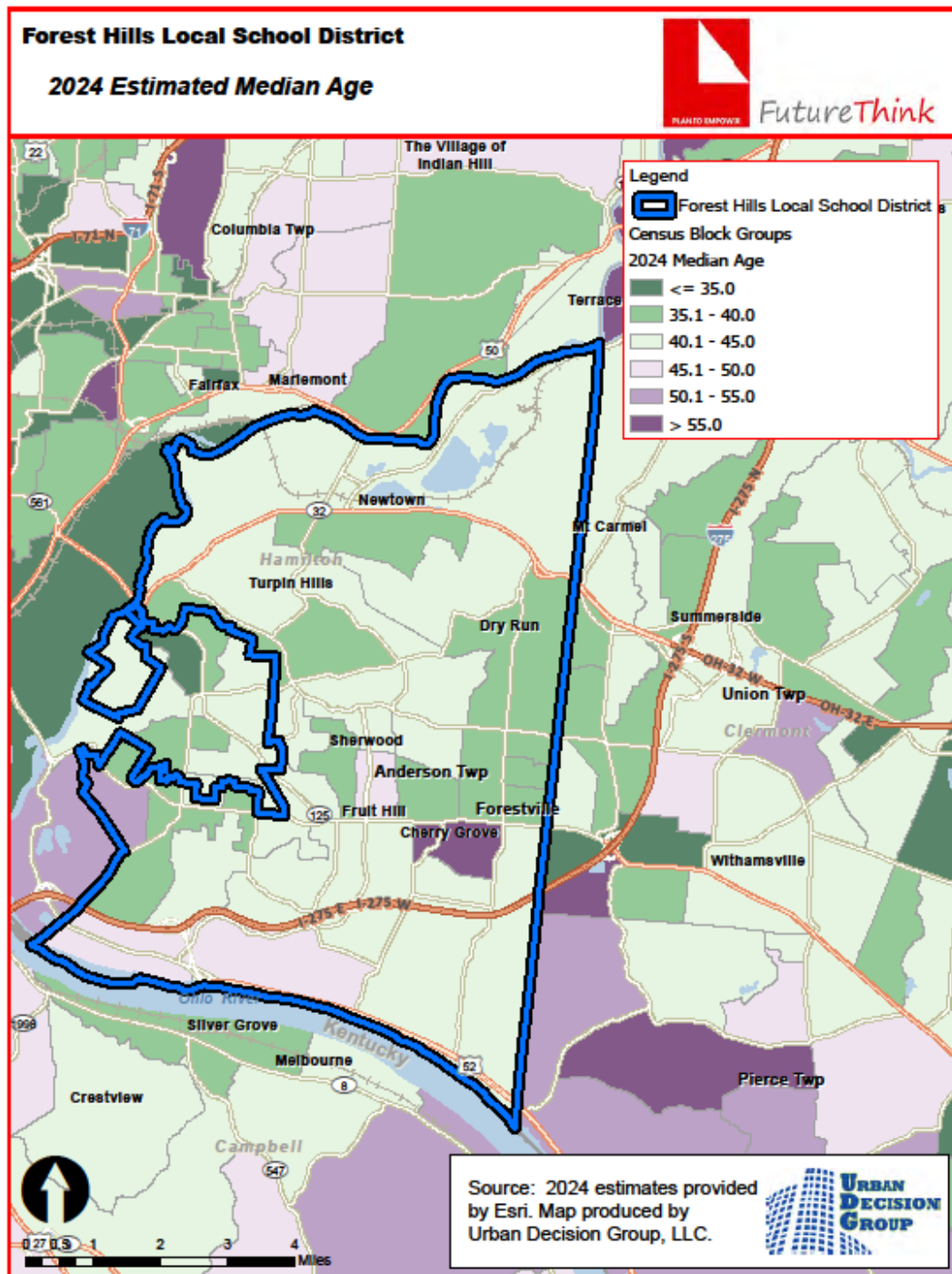
Forest Hills School District



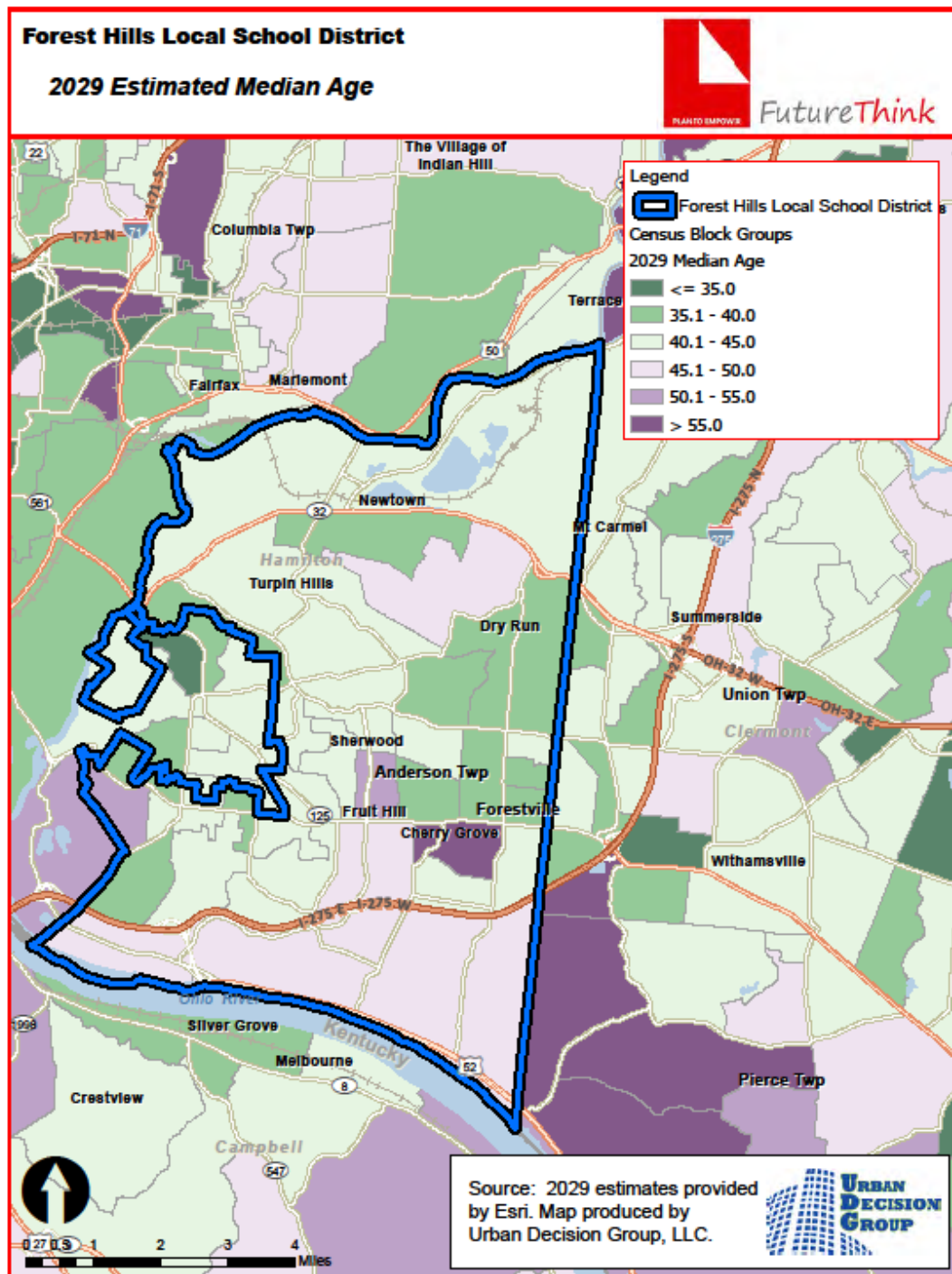
Forest Hills School District



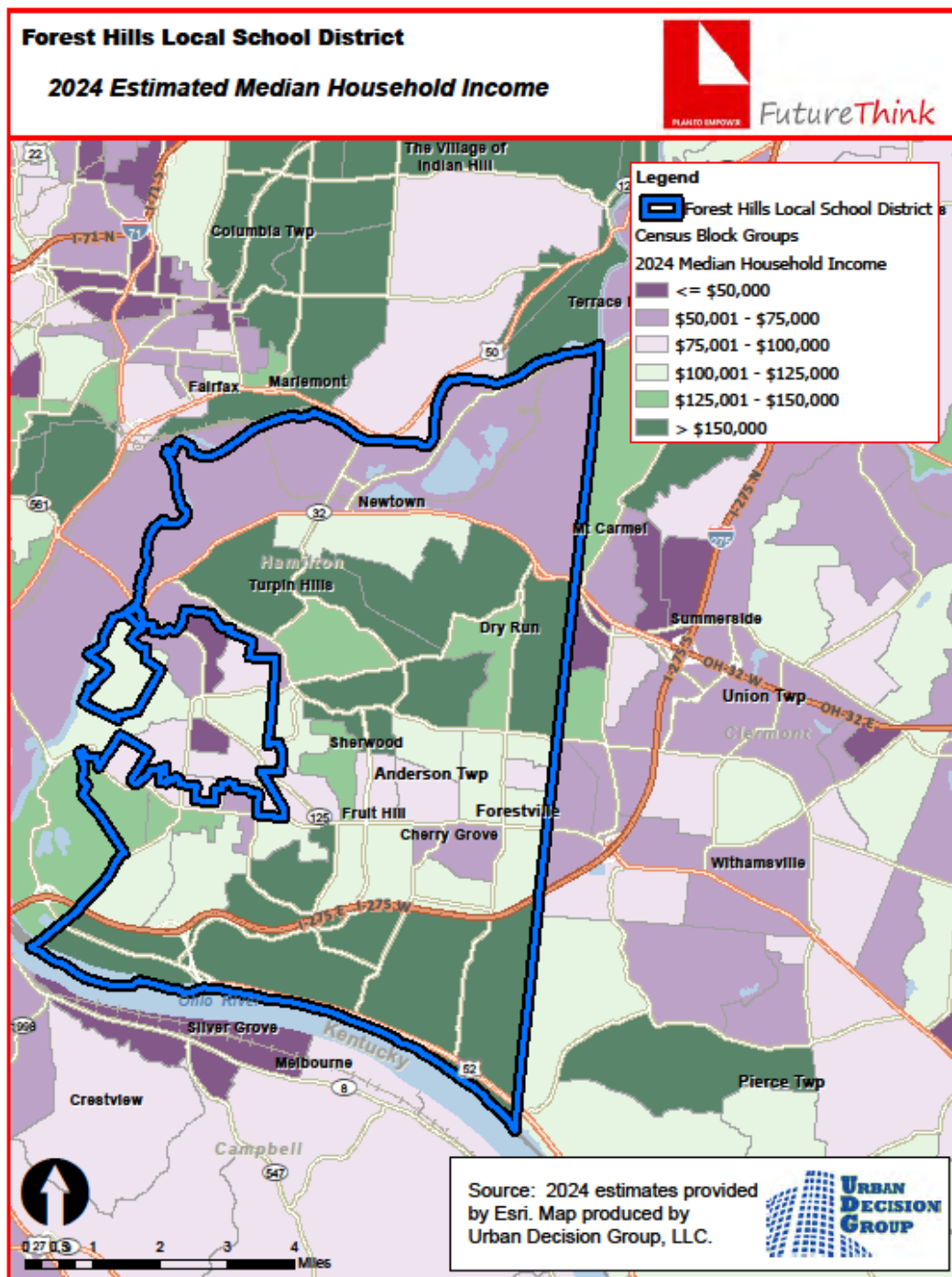
Forest Hills School District



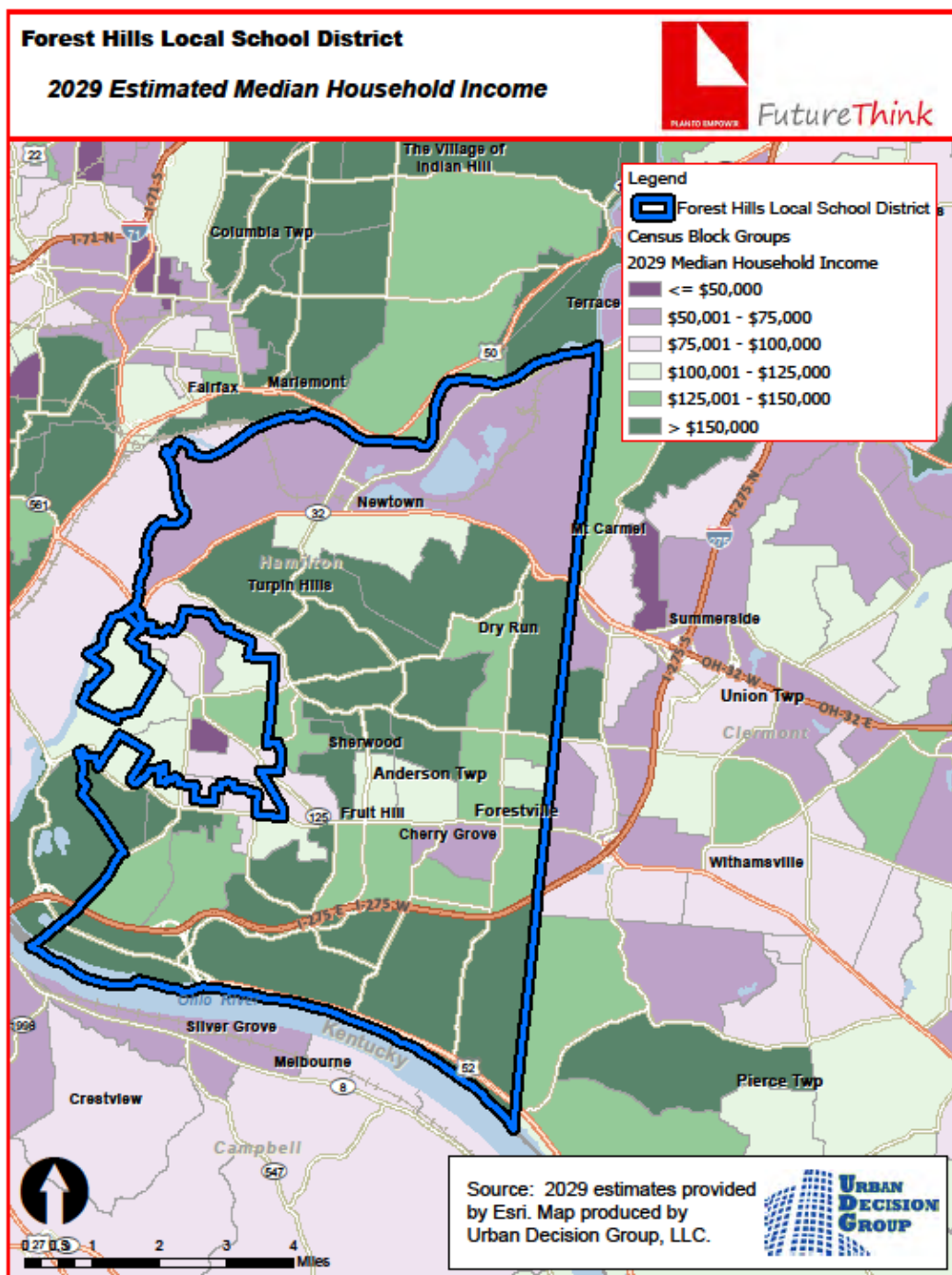
Forest Hills School District



Forest Hills School District



Forest Hills School District



Forest Hills School District

HOUSING INFORMATION

The table below illustrates the number of single-family dwelling building permits issued each year in Newtown Village and Hamilton County.

# of Building Permits Issued for Single Family Dwellings		
Year	Newtown Village	Hamilton County
2015	0	634
2016	0	745
2017	2	787
2018	5	749
2019	2	732
2020	1	709
2021	1	742
2022	1	679
2023	2	534
2024*	4	563
2025*	0	139

Source: SOCDS Building Permits Database

*preliminary through March 2025

In Anderson Township, there are several new housing developments underway. Currently, there are a total of 873 units either recently completed, under construction, or planned.

New Housing Development		
Name	Type	Total Units
Anderson Valley	Single Family	35
Cross Creek	Single Family	35
Linden Hill	Single Family	17
Meadows of Mt. Carmel	Single Family	11
Parkside Estates at Coldstream	Single Family	48
Reserves of Anderson	Single Family	32
Riverview Estates	Single Family	30
The Villas	Single Family Ranch-style	26
Single Family Subtotal		234
Eight Mile Townhomes	Townhomes	36
Nagel Village	Townhomes	17
Townhome Subtotal		53
Skytop Apartments	Multi-Family	361
Vantage Apartments	Multi-Family	225
Multi-Family Subtotal		586
Total		873

Source: Anderson Township Planning & Zoning Department



Forest Hills School District

SURVIVAL RATIOS

The chart below demonstrates the changes in enrollment as students move through the system. Percentages greater than 100 indicate that there are more students than there were in the previous grade the previous year. In other words, there was growth and new students entered the system. Percentages less than 100 indicate that there was decline with students leaving the system.

- Birth to Kindergarten: This ratio indicates the number of children born in the area who attend kindergarten in the District 5 years later. Percentages less than 100% result from movement out of the district, attendance at a non-public or charter school, or residence in another district within the same area.
- Grades 8-9: The higher than usual percentage often is a result of school district promotion policies. Often in school districts, students are promoted from 8th to 9th grade and after one year in 9th grade do not have sufficient credits to be classified as 10th graders and are counted again as 9th graders the following year. There may also be students who attended private or charter schools or are home schooled through grade 8 and then attend public schools for high school education.

The following table illustrates the survival ratios for the Forest Hills School District.

from	to	birth -> K	K->1	1->2	2->3	3->4	4->5	5->6	6->7	7->8	8->9	9->10	10->11	11->12
2015	2016	49.0%	115.6%	99.6%	100.5%	102.2%	104.9%	102.0%	100.8%	100.2%	101.4%	99.2%	94.1%	108.7%
2016	2017	56.8%	118.5%	105.0%	106.2%	101.2%	103.3%	101.1%	103.6%	98.7%	101.5%	99.0%	92.2%	102.2%
2017	2018	53.2%	103.5%	101.9%	99.4%	98.9%	100.7%	99.8%	102.0%	98.6%	101.2%	99.7%	94.4%	98.2%
2018	2019	57.6%	106.0%	99.8%	101.7%	102.7%	99.8%	100.9%	102.0%	101.0%	103.3%	99.2%	95.0%	97.6%
2019	2020	55.0%	103.2%	101.8%	100.4%	103.2%	100.6%	103.0%	105.7%	100.9%	98.4%	99.5%	94.7%	95.1%
2020	2021	56.2%	108.2%	100.8%	102.6%	100.2%	102.4%	99.3%	98.2%	99.8%	104.0%	99.5%	94.4%	102.3%
2021	2022	48.2%	104.2%	100.6%	99.4%	100.2%	99.4%	97.9%	99.1%	100.6%	96.9%	99.7%	92.1%	95.7%
2022	2023	51.1%	104.6%	97.9%	100.4%	99.2%	99.6%	101.5%	100.4%	100.4%	95.5%	100.5%	92.2%	96.0%
2023	2024	50.6%	102.6%	102.4%	101.4%	99.8%	101.6%	100.6%	97.1%	101.6%	101.3%	99.0%	91.3%	97.5%
	average	53.08%	107.395%	101.09%	101.3%	100.84%	101.4%	100.7%	101.0%	100.2%	100.387%	99.463%	93.387%	99.262%
	standard deviation	3.303%	5.440%	1.904%	1.970%	1.460%	1.744%	1.448%	2.538%	0.962%	2.678%	0.442%	1.334%	4.132%

Forest Hills School District

ENROLLMENT PROJECTION

Enrollment projections were developed after analyzing the data collected in this report. The projections indicate a decrease of 332 students in grades Pre-K through 12 from the 2024-25 to the 2034-35 school year. The following tables and graph illustrate projected enrollments by grade and by grade group through the 2034-35 school year.

**Forest Hills School District
Projected Enrollment**

Grade	2024-25 Actual	2025-26	2026-27	2027-28	2028-29	2029-30	2030-31	2031-32	2032-33	2033-34	2034-35
Pre-K	190	209	221	215	200	215	215	215	215	215	215
K	426	434	459	447	416	447	447	447	447	447	447
1	466	448	456	483	471	437	471	471	471	471	471
2	466	471	454	462	489	477	445	477	477	477	477
3	514	475	481	461	471	498	485	451	485	485	485
4	516	517	477	482	466	473	501	489	455	489	489
5	515	518	521	482	487	467	476	506	491	458	491
6	517	518	522	526	484	490	471	478	508	495	460
7	527	521	526	533	534	494	504	483	487	516	503
8	561	531	526	531	537	539	498	508	487	491	520
9	542	565	534	527	536	546	545	502	504	485	502
10	506	541	564	535	528	535	545	546	501	505	485
11	548	474	507	529	501	494	501	511	511	469	473
12	516	534	462	495	515	488	481	489	498	498	458
Pre-K - 12 Total	6,810	6,756	6,710	6,708	6,635	6,600	6,585	6,573	6,537	6,501	6,476
13/23	12	15	15	15	15	15	15	15	15	14	14
Grand Total	6,822	6,771	6,725	6,723	6,650	6,615	6,600	6,588	6,552	6,515	6,490

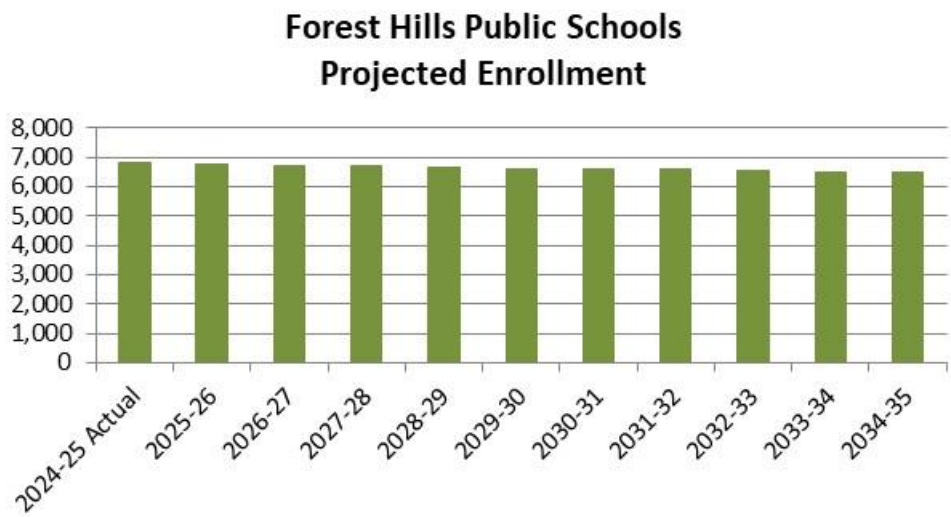
Source: FutureThink

**Forest Hills School District
Projected Enrollment by Grade Group**

Grade	2024-25 Actual	2025-26	2026-27	2027-28	2028-29	2029-30	2030-31	2031-32	2032-33	2033-34	2034-35
Pre-K - 6	3,610	3,590	3,591	3,558	3,484	3,504	3,511	3,534	3,549	3,537	3,535
7 - 8	1,088	1,052	1,052	1,064	1,071	1,033	1,002	991	974	1,007	1,023
9 - 12	2,112	2,114	2,067	2,086	2,080	2,063	2,072	2,048	2,014	1,957	1,918
Pre-K - 12 Total	6,810	6,756	6,710	6,708	6,635	6,600	6,585	6,573	6,537	6,501	6,476
13/23	12	15	15	15	15	15	15	15	15	14	14
Grand Total	6,822	6,771	6,725	6,723	6,650	6,615	6,600	6,588	6,552	6,515	6,490

Source: FutureThink

Forest Hills School District



By School Projections

Projections were also completed by grade, by school. Following are the historical and projected enrollments for each school.

Enrollment at the elementary schools is projected to decrease by 75 students, at the middle school by 65 students, and at the high schools by 194 students.

Forest Hills School District

Ayer Elementary School
Historical Enrollment

Grade	2015-16	2016-17	2017-18	2018-19	2019-20	2020-21	2021-22	2022-23	2023-24	2024-25
K	74	71	88	80	90	90	92	63	62	74
1	79	82	89	85	88	94	97	97	68	66
2	100	74	89	85	86	90	85	100	96	72
3	97	98	83	86	84	85	94	84	95	102
4	90	102	98	89	95	86	81	99	84	96
5	96	89	107	93	87	92	82	81	95	86
6	104	92	93	100	90	85	92	82	82	98
Grand Total	640	608	647	618	620	622	623	606	582	594

Source: Forest Hills School District; Headcount

Ayer Elementary School
Projected Enrollment

Grade	2025-26	2026-27	2027-28	2028-29	2029-30	2030-31	2031-32	2032-33	2033-34	2034-35
K	70	74	72	67	72	72	72	72	72	72
1	79	75	79	77	72	77	77	77	77	77
2	66	79	75	79	77	72	77	77	77	77
3	73	67	80	76	80	78	73	78	78	78
4	104	74	68	82	77	82	80	74	80	80
5	95	104	74	68	81	77	81	79	74	79
6	87	97	105	75	69	82	78	82	80	75
Grand Total	574	570	553	524	528	540	538	539	538	538

Source: FutureThink

Maddux Elementary School
Historical Enrollment

Grade	2015-16	2016-17	2017-18	2018-19	2019-20	2020-21	2021-22	2022-23	2023-24	2024-25
Pre-K	0	0	1	1	0	0	0	0	0	0
K	66	63	86	84	80	67	82	58	81	57
1	69	71	72	91	91	82	77	87	60	76
2	71	71	69	73	91	98	88	80	83	62
3	86	73	73	64	72	94	99	88	76	85
4	84	91	71	72	68	74	91	96	89	77
5	100	92	88	70	72	72	91	91	95	90
6	89	105	90	86	69	76	64	80	97	101
Grand Total	565	566	550	541	543	563	592	580	581	548

Source: Forest Hills School District; Headcount

Maddux Elementary School
Projected Enrollment

Grade	2025-26	2026-27	2027-28	2028-29	2029-30	2030-31	2031-32	2032-33	2033-34	2034-35
K	67	71	69	64	69	69	69	69	69	69
1	60	71	75	73	68	73	73	73	73	73
2	77	61	72	76	74	69	74	74	74	74
3	63	78	62	73	77	75	70	75	75	75
4	86	64	79	63	74	78	76	71	76	76
5	78	87	65	80	63	75	79	77	72	77
6	91	79	88	65	81	64	75	80	78	72
Grand Total	522	511	510	494	506	503	516	519	517	516

Source: FutureThink

Forest Hills School District

Mercer Elementary School

Historical Enrollment

Grade	2015-16	2016-17	2017-18	2018-19	2019-20	2020-21	2021-22	2022-23	2023-24	2024-25
Pre-K	88	2	4	0	3	1	0	0	0	0
K	75	77	86	85	89	86	79	94	85	73
1	94	92	89	99	95	85	97	77	99	81
2	117	100	100	88	103	88	92	93	73	101
3	90	115	115	106	90	101	94	93	100	75
4	114	89	115	109	107	89	104	92	94	96
5	97	123	102	116	106	108	90	104	94	96
6	133	96	124	105	116	105	113	90	98	91
Grand Total	808	694	735	708	709	663	669	643	643	613

Source: Forest Hills School District; Headcount

Mercer Elementary School

Projected Enrollment

Grade	2025-26	2026-27	2027-28	2028-29	2029-30	2030-31	2031-32	2032-33	2033-34	2034-35
K	77	81	79	74	79	79	79	79	79	79
1	75	79	84	82	76	82	82	82	82	82
2	82	76	80	85	83	77	83	83	83	83
3	105	86	79	84	89	86	80	86	86	86
4	75	105	85	79	83	88	86	80	86	86
5	97	76	107	87	80	84	90	87	81	87
6	96	97	76	106	86	80	84	89	87	81
Grand Total	607	600	590	597	576	576	584	586	584	584

Source: FutureThink

Sherwood Elementary School

Historical Enrollment

Grade	2015-16	2016-17	2017-18	2018-19	2019-20	2020-21	2021-22	2022-23	2023-24	2024-25
Pre-K	0	80	101	100	104	94	188	220	221	190
K	72	61	85	78	70	72	79	64	76	57
1	76	78	78	82	72	74	72	84	71	84
2	89	68	79	82	80	78	73	65	87	73
3	68	89	65	77	82	77	76	70	69	90
4	71	66	88	67	76	85	81	75	64	69
5	77	80	65	96	67	74	86	80	77	67
6	76	78	81	68	100	69	73	85	80	79
Grand Total	529	600	642	650	651	623	728	743	745	709

Source: Forest Hills School District; Headcount

Sherwood Elementary School

Projected Enrollment

Grade	2025-26	2026-27	2027-28	2028-29	2029-30	2030-31	2031-32	2032-33	2033-34	2034-35
Pre-K	209	221	215	200	215	215	215	215	215	215
K	69	73	71	66	71	71	71	71	71	71
1	61	73	78	76	70	76	76	76	76	76
2	85	62	74	79	77	72	77	77	77	77
3	74	86	62	75	80	78	72	78	78	78
4	89	73	85	62	75	79	77	72	77	77
5	70	91	74	87	63	76	81	78	73	78
6	68	71	93	76	88	64	77	82	80	74
Grand Total	725	750	752	721	739	731	746	749	747	746

Source: FutureThink

Forest Hills School District

Summit Elementary School

Historical Enrollment

Grade	2015-16	2016-17	2017-18	2018-19	2019-20	2020-21	2021-22	2022-23	2023-24	2024-25
Pre-K	50	62	62	64	69	53	0	0	0	0
K	71	72	82	62	77	63	69	74	61	74
1	89	88	77	89	61	81	70	71	74	69
2	81	88	87	82	88	59	83	73	66	77
3	74	83	91	87	85	87	64	84	76	65
4	79	74	86	82	87	85	85	66	84	80
5	84	79	76	87	84	89	85	86	66	86
6	86	88	75	75	92	87	88	84	90	61
Grand Total	614	634	636	628	643	604	544	538	517	512

Source: Forest Hills School District; Headcount

Summit Elementary School

Projected Enrollment

Grade	2025-26	2026-27	2027-28	2028-29	2029-30	2030-31	2031-32	2032-33	2033-34	2034-35
K	66	70	68	63	68	68	68	68	68	68
1	80	71	75	73	68	73	73	73	73	73
2	71	83	74	78	76	71	76	76	76	76
3	79	74	85	76	80	78	73	78	78	78
4	66	80	75	87	77	82	80	74	80	80
5	66	80	75	87	77	82	80	74	80	80
6	81	67	82	76	88	78	83	81	75	81
Grand Total	509	525	534	540	534	532	533	524	530	536

Source: FutureThink

Wilson Elementary School

Historical Enrollment

Grade	2015-16	2016-17	2017-18	2018-19	2019-20	2020-21	2021-22	2022-23	2023-24	2024-25
K	77	89	91	76	88	95	96	82	89	91
1	97	92	108	90	86	94	99	102	83	90
2	107	101	104	113	87	89	93	104	102	81
3	96	110	106	105	119	93	88	92	101	97
4	93	100	117	108	106	130	96	88	92	98
5	97	94	101	117	110	107	128	93	87	90
6	117	103	100	104	117	120	108	129	96	87
Grand Total	684	689	727	713	713	728	708	690	650	634

Source: Forest Hills School District; Headcount

Wilson Elementary School

Projected Enrollment

Grade	2025-26	2026-27	2027-28	2028-29	2029-30	2030-31	2031-32	2032-33	2033-34	2034-35
K	85	90	88	82	88	88	88	88	88	88
1	93	87	92	90	83	90	90	90	90	90
2	90	93	87	92	90	84	90	90	90	90
3	81	90	93	87	92	90	83	90	90	90
4	97	81	90	93	87	92	90	84	90	90
5	97	81	90	93	87	92	90	84	90	90
6	97	96	80	89	92	86	92	89	83	89
Grand Total	640	618	620	626	619	622	623	615	621	627

Source: FutureThink

Forest Hills School District

Nagel Middle School

Historical Enrollment

Grade	2015-16	2016-17	2017-18	2018-19	2019-20	2020-21	2021-22	2022-23	2023-24	2024-25
7	618	610	582	574	549	617	532	533	552	527
8	572	619	602	574	580	554	616	535	535	561
Grand Total	1,190	1,229	1,184	1,148	1,129	1,171	1,148	1,068	1,087	1,088

Source: Forest Hills School District; Headcount

Nagel Middle School

Projected Enrollment

Grade	2025-26	2026-27	2027-28	2028-29	2029-30	2030-31	2031-32	2032-33	2033-34	2034-35
7	521	526	533	534	494	504	483	487	516	503
8	531	526	531	537	539	498	508	487	491	520
Grand Total	1,052	1,052	1,064	1,071	1,033	1,002	991	974	1,007	1,023

Source: FutureThink

Anderson High School

Historical Enrollment

Grade	2015-16	2016-17	2017-18	2018-19	2019-20	2020-21	2021-22	2022-23	2023-24	2024-25
9	328	336	327	303	320	295	316	304	272	274
10	349	329	331	322	301	312	291	322	315	271
11	254	330	298	316	295	290	295	272	301	291
12	261	284	342	292	297	275	291	276	255	290
Grand Total	1,192	1,279	1,298	1,233	1,213	1,172	1,193	1,174	1,143	1,126

Source: Forest Hills School District; Headcount

Anderson High School

Projected Enrollment

Grade	2025-26	2026-27	2027-28	2028-29	2029-30	2030-31	2031-32	2032-33	2033-34	2034-35
9	292	276	296	298	297	309	259	266	259	274
10	276	294	279	299	300	299	312	261	269	261
11	254	259	276	261	280	281	280	292	244	252
12	281	245	250	266	252	270	272	271	282	236
Grand Total	1,103	1,074	1,101	1,124	1,129	1,159	1,123	1,090	1,054	1,023

Source: FutureThink

Turpin High School

Historical Enrollment

Grade	2015-16	2016-17	2017-18	2018-19	2019-20	2020-21	2021-22	2022-23	2023-24	2024-25
9	292	244	301	306	273	276	260	293	239	268
10	316	286	243	304	303	278	277	252	285	235
11	277	296	269	226	300	282	262	251	228	257
12	291	293	298	265	232	291	294	257	247	226
Grand Total	1,176	1,119	1,111	1,101	1,108	1,127	1,093	1,053	999	986

Source: Forest Hills School District; Headcount

Turpin High School

Projected Enrollment

Grade	2025-26	2026-27	2027-28	2028-29	2029-30	2030-31	2031-32	2032-33	2033-34	2034-35
9	273	258	231	238	249	236	243	238	226	228
10	265	270	256	229	235	246	234	240	236	224
11	220	248	253	240	214	220	231	219	225	221
12	253	217	245	249	236	211	217	227	216	222
Grand Total	1,011	993	985	956	934	913	925	924	903	895

Source: FutureThink



Forest Hills School District

CONCLUSION

As with any projection, the District should pay close attention to live birth counts, enrollment in elementary schools, community school enrollment, open enrollment, and any housing growth. Each of these factors will have an impact on future student enrollment.

FutureThink is pleased to have had the opportunity to provide the District with enrollment projection services. We hope this document will provide the necessary information to make informed decisions about the future of the Forest Hills School District.

