



Forest Hills
School District

Forest Hills School District
Board of Education
September 16, 2025



FutureThink
PLAN TO EMPOWER



FutureThink
PLAN TO EMPOWER

a WBE-certified educational
planning firm

Our mission is to empower the people and communities with whom we work—enhancing the educational experience through planning.

- Tracy Healy, Owner & President
- In operation since May 2006, 30+ years of experience
- Work with 1,000+ districts across the country
- Provides national perspective with numerous case studies & lessons learned
- Sole provider of enrollment projections for the State of Ohio

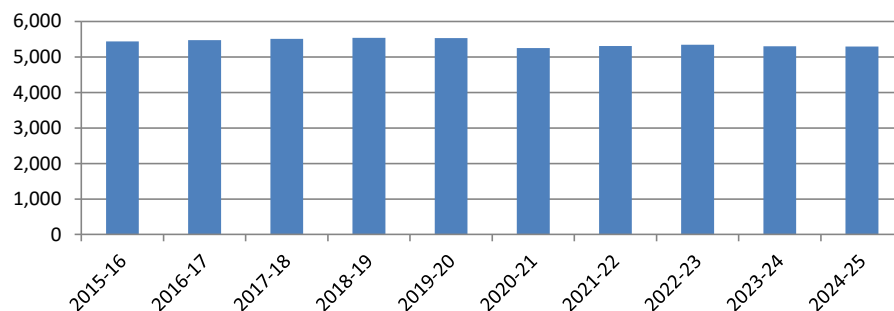


FutureThink
PLAN TO EMPOWER

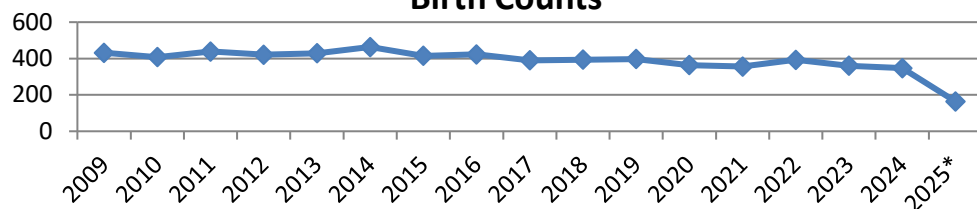
Projecting Enrollment

- ❑ **Historical Enrollment**
- ❑ **Birth Data**
- ❑ **Population Estimates**
- ❑ **Housing Data**
- ❑ **Other Variables**

**Natick Public Schools
Historical Enrollment**



**Town of Natick
Birth Counts**



Historical Enrollment – decrease of 595 students (8%) over last 10 years

**Forest Hills School District
Historical Enrollment**

Grade	2015-16	2016-17	2017-18	2018-19	2019-20	2020-21	2021-22	2022-23	2023-24	2024-25
Pre-K	138	144	168	165	176	148	188	220	221	190
K	435	433	518	465	494	473	497	435	454	426
1	504	503	513	536	493	510	512	518	455	466
2	565	502	528	523	535	502	514	515	507	466
3	511	568	533	525	532	537	515	511	517	514
4	531	522	575	527	539	549	538	516	507	516
5	551	557	539	579	526	542	562	535	514	515
6	605	562	563	538	584	542	538	550	543	517
7	618	610	582	574	549	617	532	533	552	527
8	572	619	602	574	580	554	616	535	535	561
9	620	580	628	609	593	571	576	597	511	542
10	665	615	574	626	604	590	568	574	600	506
11	531	626	567	542	595	572	557	523	529	548
12	552	577	640	557	529	566	585	533	502	516
Pre-K - 12 Total	7,398	7,418	7,530	7,340	7,329	7,273	7,298	7,095	6,947	6,810
13/23	19	19	11	14	16	17	13	18	15	12
Grand Total	7,417	7,437	7,541	7,354	7,345	7,290	7,311	7,113	6,962	6,822

Source: Forest Hills School District; Headcount

Historical Enrollment

Pre-K-6 – decrease of 230 students

7-8 – decrease of 102 students

9-12 – decrease of 256 students

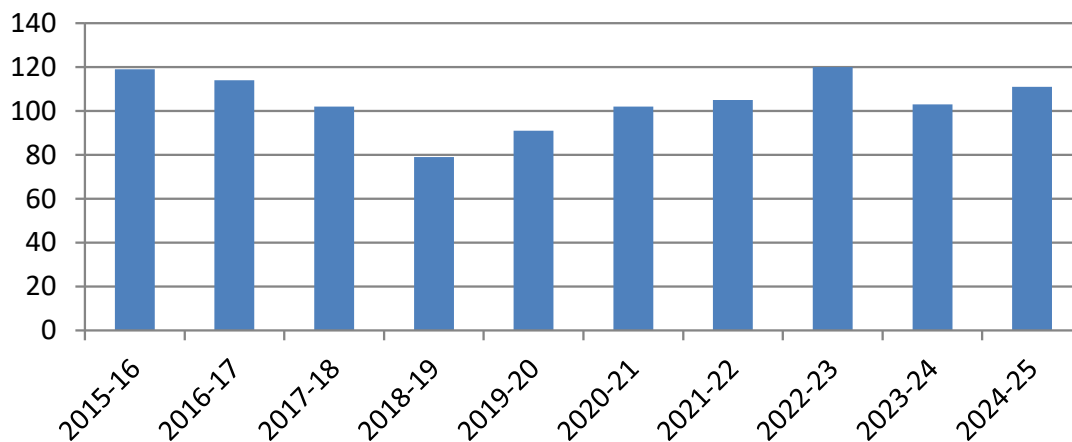
**Forest Hills School District
Historical Enrollment by Grade Group**

Grade	2015-16	2016-17	2017-18	2018-19	2019-20	2020-21	2021-22	2022-23	2023-24	2024-25
Pre-K - 6	3,840	3,791	3,937	3,858	3,879	3,803	3,864	3,800	3,718	3,610
7 - 8	1,190	1,229	1,184	1,148	1,129	1,171	1,148	1,068	1,087	1,088
9 - 12	2,368	2,398	2,409	2,334	2,321	2,299	2,286	2,227	2,142	2,112
Pre-K - 12 Total	7,398	7,418	7,530	7,340	7,329	7,273	7,298	7,095	6,947	6,810
13/23	19	19	11	14	16	17	13	18	15	12
Grand Total	7,417	7,437	7,541	7,354	7,345	7,290	7,311	7,113	6,962	6,822

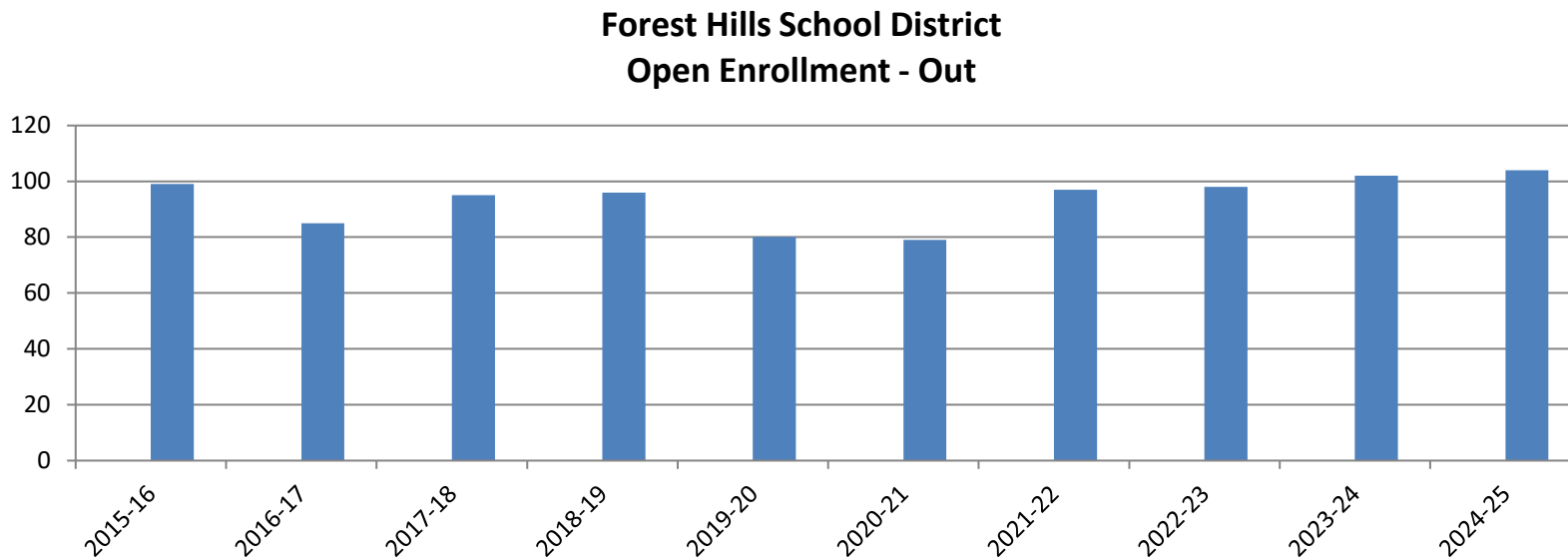
Source: Forest Hills School District; Headcount

Community School enrollment has fluctuated between 79 and 120 students.

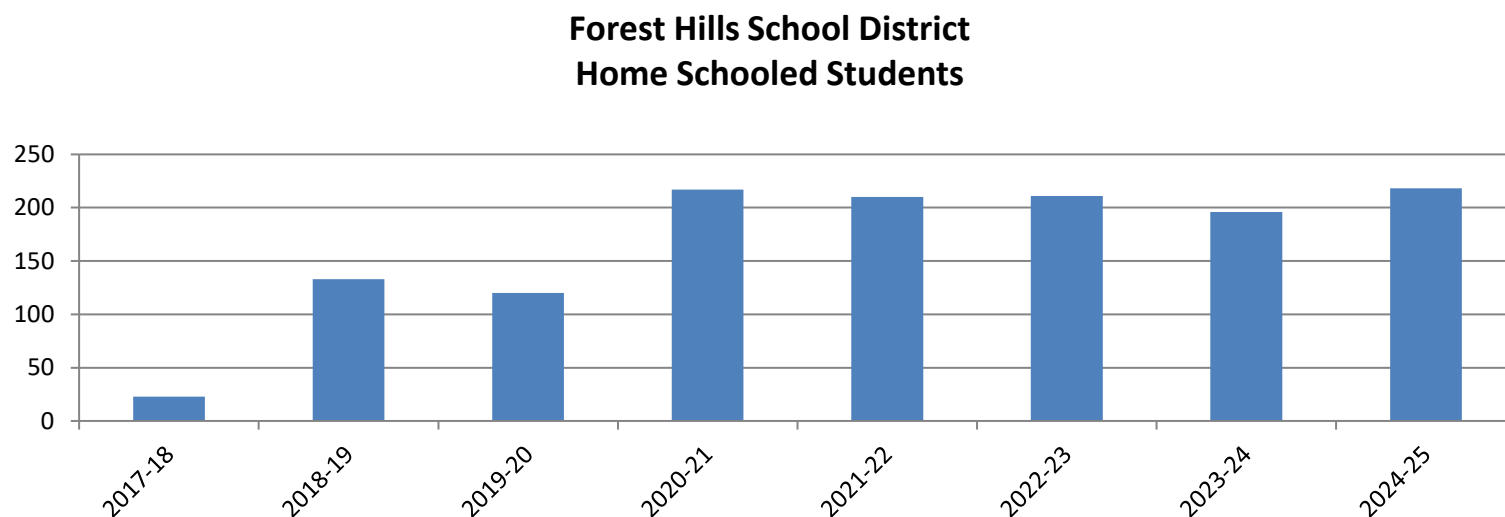
**Forest Hills School District
Students Attending Community Schools**



Open enrollment has fluctuated between 79 and 104 students.



Home school enrollment has increased from 23 to 218 students over the last 8 years.



Birth Counts – indicator of future K

**Forest Hills School District
Live Birth Counts by Zip Code
2009-2023**

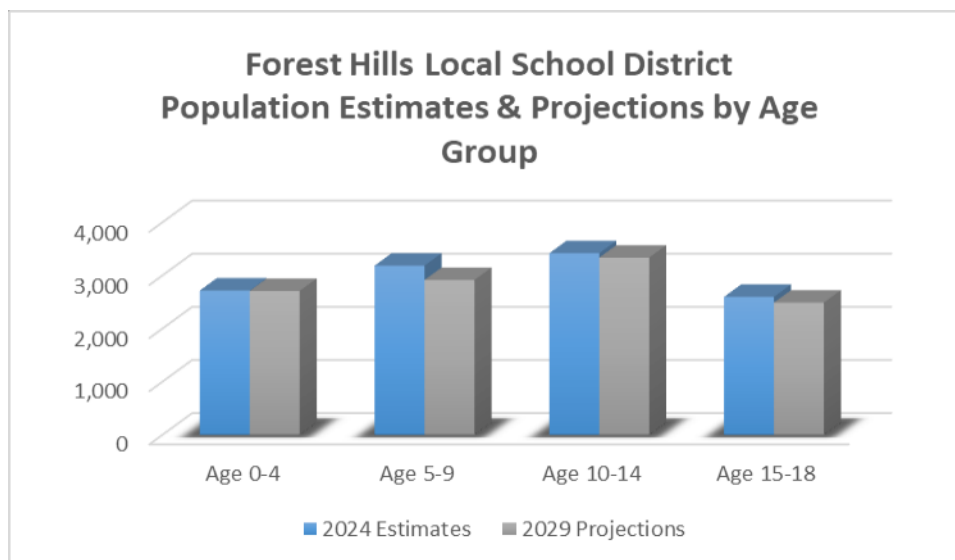
Year	45230	45244	45255	Total
2009	375	347	244	966
2010	343	326	251	920
2011	332	337	215	884
2012	369	319	224	912
2013	361	307	206	874
2014	329	318	210	857
2015	333	310	217	860
2016	339	318	228	885
2017	370	306	226	902
2018	341	325	222	888
2019	324	303	215	842
2020	333	278	195	806
2021	316	294	245	855
2022	336	276	221	833
2023	302	272	200	774

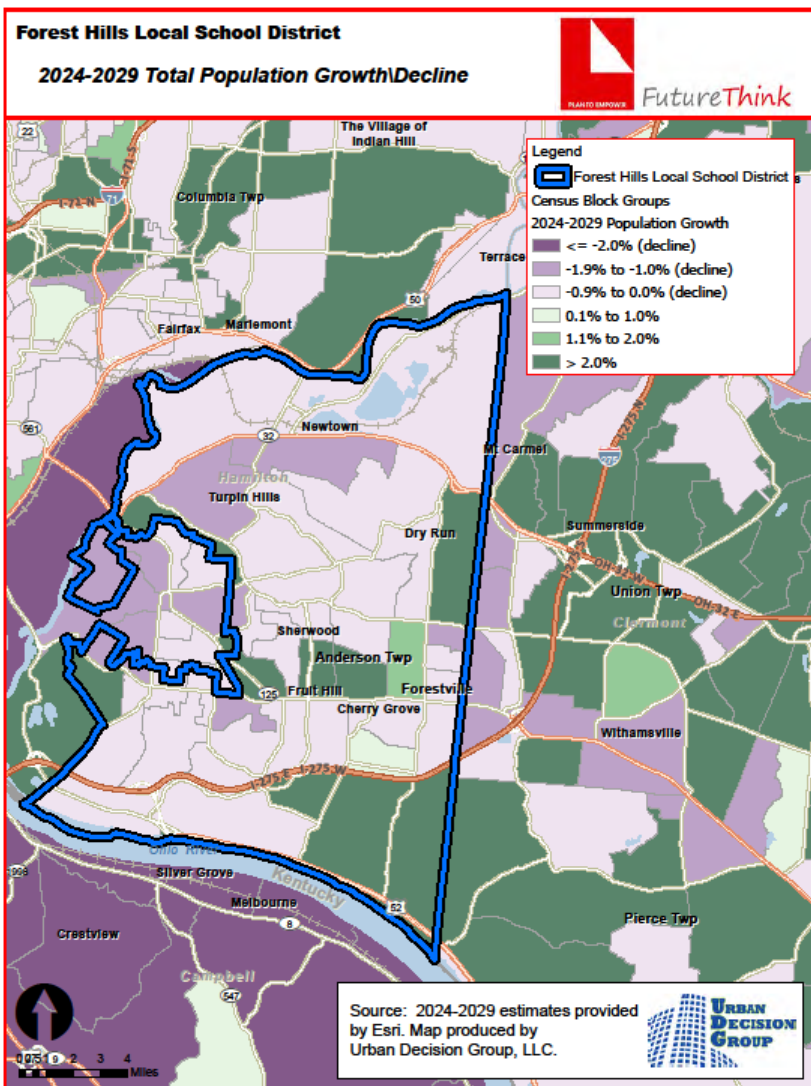
Source: Ohio Department of Health, Data Warehouse

General Demographics

Forest Hills Local School District	2024 Estimates	2029 Projections	Change 2024-29	Change 2024-29 (%)
Total Population	46,679	47,172	493	1.1%
Age 0-4	2,718	2,710	-8	-0.3%
Age 5-9	3,185	2,915	-270	-8.5%
Age 10-14	3,419	3,336	-83	-2.4%
Age 15-18	2,598	2,490	-108	-4.2%
Total Age 0-18	11,920	11,451	-469	-3.9%
Median Age	41.2	42.0	0.8	1.9%

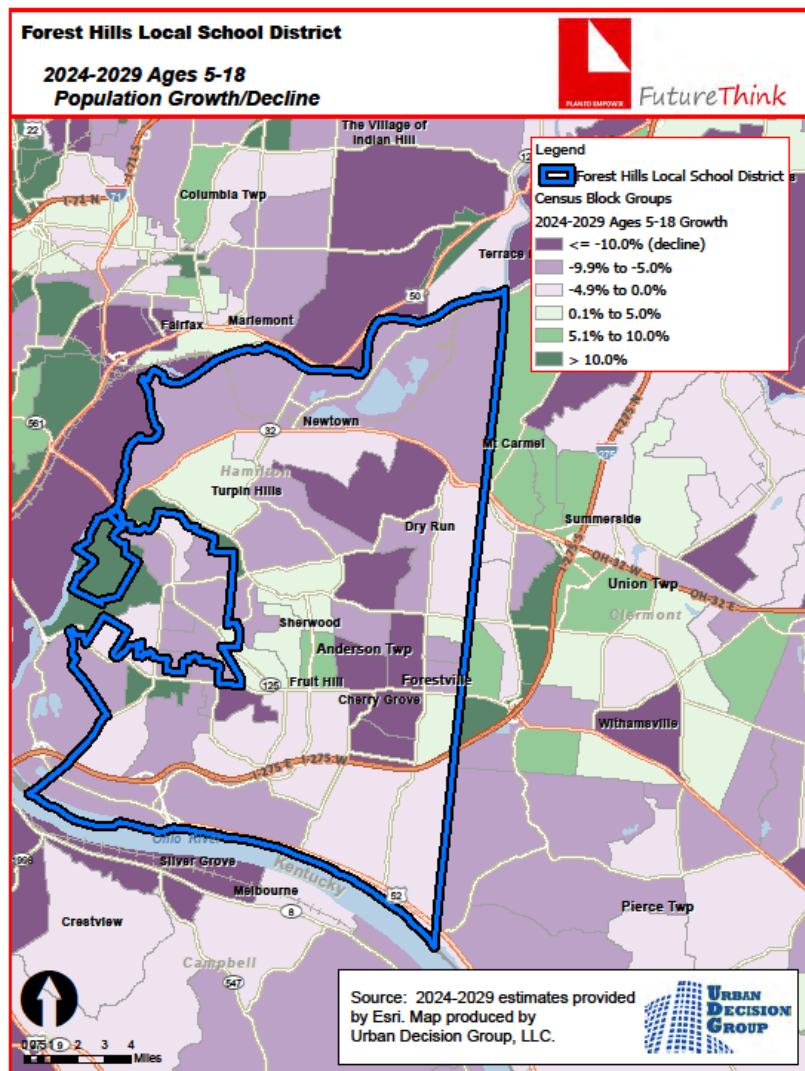
Source: Esri





Total population is projected to increase over the next 5 years by 1%.

Areas in green are projected to increase while areas in purple are projected to decrease.



School age population is projected to decrease over the next 5 years by 4%.

Areas in shades of green are projected to increase, and areas in shades of purple are expected to decrease.

Housing – Single Family Building Permits

of Building Permits Issued for Single Family Dwellings

Year	Newtown Village	Hamilton County
2015	0	634
2016	0	745
2017	2	787
2018	5	749
2019	2	732
2020	1	709
2021	1	742
2022	1	679
2023	2	534
2024*	4	563
2025*	0	139

Source: SOCDs Building Permits Database

*preliminary through March 2025

Survival Ratios– measure change grade to grade, year by year (in/out migration)

from	to	birth -> K	K->1	1->2	2->3	3->4	4->5	5->6
2015	2016	49.0%	115.6%	99.6%	100.5%	102.2%	104.9%	102.0%
2016	2017	56.8%	118.5%	105.0%	106.2%	101.2%	103.3%	101.1%
2017	2018	53.2%	103.5%	101.9%	99.4%	98.9%	100.7%	99.8%
2018	2019	57.6%	106.0%	99.8%	101.7%	102.7%	99.8%	100.9%
2019	2020	55.0%	103.2%	101.8%	100.4%	103.2%	100.6%	103.0%
2020	2021	56.2%	108.2%	100.8%	102.6%	100.2%	102.4%	99.3%
2021	2022	48.2%	104.2%	100.6%	99.4%	100.2%	99.4%	97.9%
2022	2023	51.1%	104.6%	97.9%	100.4%	99.2%	99.6%	101.5%
2023	2024	50.6%	102.6%	102.4%	101.4%	99.8%	101.6%	100.6%
	average	53.08%	107.395%	101.09%	101.3%	100.84%	101.4%	100.7%
	standard deviation	3.303%	5.440%	1.904%	1.970%	1.460%	1.744%	1.448%



Survival Ratios– measure change grade to grade, year by year (in/out migration)

from	to	6->7	7->8	8->9	9->10	10->11	11->12
2015	2016	100.8%	100.2%	101.4%	99.2%	94.1%	108.7%
2016	2017	103.6%	98.7%	101.5%	99.0%	92.2%	102.2%
2017	2018	102.0%	98.6%	101.2%	99.7%	94.4%	98.2%
2018	2019	102.0%	101.0%	103.3%	99.2%	95.0%	97.6%
2019	2020	105.7%	100.9%	98.4%	99.5%	94.7%	95.1%
2020	2021	98.2%	99.8%	104.0%	99.5%	94.4%	102.3%
2021	2022	99.1%	100.6%	96.9%	99.7%	92.1%	95.7%
2022	2023	100.4%	100.4%	95.5%	100.5%	92.2%	96.0%
2023	2024	97.1%	101.6%	101.3%	99.0%	91.3%	97.5%
	average	101.0%	100.2%	100.387%	99.463%	93.387%	99.262%
	standard deviation	2.538%	0.962%	2.678%	0.442%	1.334%	4.132%



Enrollment Projections – decrease of 332 students (5%)

**Forest Hills School District
Projected Enrollment**

Grade	2024-25 Actual	2025-26	2026-27	2027-28	2028-29	2029-30	2030-31	2031-32	2032-33	2033-34	2034-35
Pre-K	190	209	221	215	200	215	215	215	215	215	215
K	426	434	459	447	416	447	447	447	447	447	447
1	466	448	456	483	471	437	471	471	471	471	471
2	466	471	454	462	489	477	445	477	477	477	477
3	514	475	481	461	471	498	485	451	485	485	485
4	516	517	477	482	466	473	501	489	455	489	489
5	515	518	521	482	487	467	476	506	491	458	491
6	517	518	522	526	484	490	471	478	508	495	460
7	527	521	526	533	534	494	504	483	487	516	503
8	561	531	526	531	537	539	498	508	487	491	520
9	542	565	534	527	536	546	545	502	504	485	502
10	506	541	564	535	528	535	545	546	501	505	485
11	548	474	507	529	501	494	501	511	511	469	473
12	516	534	462	495	515	488	481	489	498	498	458
Pre-K - 12 Total	6,810	6,756	6,710	6,708	6,635	6,600	6,585	6,573	6,537	6,501	6,476
13/23	12	15	15	15	15	15	15	15	15	14	14
Grand Total	6,822	6,771	6,725	6,723	6,650	6,615	6,600	6,588	6,552	6,515	6,490

Source: FutureThink

Projections by Grade Group

Pre-K-6 – decrease of 75 students

7-8 – decrease of 65 students

9-12 – decrease of 194 students

**Forest Hills School District
Projected Enrollment by Grade Group**

Grade	2024-25 Actual	2025-26	2026-27	2027-28	2028-29	2029-30	2030-31	2031-32	2032-33	2033-34	2034-35
Pre-K - 6	3,610	3,590	3,591	3,558	3,484	3,504	3,511	3,534	3,549	3,537	3,535
7 - 8	1,088	1,052	1,052	1,064	1,071	1,033	1,002	991	974	1,007	1,023
9 - 12	2,112	2,114	2,067	2,086	2,080	2,063	2,072	2,048	2,014	1,957	1,918
Pre-K - 12 Total	6,810	6,756	6,710	6,708	6,635	6,600	6,585	6,573	6,537	6,501	6,476
13/23	12	15	15	15	15	15	15	15	15	14	14
Grand Total	6,822	6,771	6,725	6,723	6,650	6,615	6,600	6,588	6,552	6,515	6,490

Source: FutureThink

Questions?
Thank you!

