

**Forest Hills School District**

# **2026 Camp Kern Parent Information Packet**

**Student Permission Form  
&  
Health Information**

**PARENT MEETING  
FEBRUARY 5<sup>TH</sup> 7:00 P.M.  
NAGEL CAFETORIUM**

**CAMP DATES:**

**SESSION 1: APRIL 27-29, MADDUX/SHERWOOD**

**SESSION 2: APRIL 29-MAY 1, AYER/SUMMIT**

**SESSION 3: MAY 6-8, MERCER/WILSON**





Larry R. Hook  
Superintendent  
Alana Cropper  
Treasurer  
Kim Tinsley  
Assistant Superintendent

February 2026

Dear Parents:

The Forest Hills School District offers an environmental educational experience to all 5th-grade students. An overnight or day program at the YMCA Camp Kern located near Lebanon, Ohio, is being planned for groups of approximately 200 students. Each group will be at camp for three days and two nights. Forest Hills teachers and staff provide leadership during the camp session, and Turpin and Anderson students are selected as camp counselors, assisting teachers in lessons and activities. The high school counselors, along with a parent, will sleep in the cabins with the 5th-grade students. Session 1 (Maddux/Sherwood) will leave for camp on Monday and return on Wednesday, April 27-April 29. Session 2 (Ayer/Summit) will leave for camp on Wednesday and return on Friday, April 29-May 1. Session 3 (Mercer/Wilson) will leave for camp on Wednesday and return on Friday, May 6-May 8.

This opportunity will provide first-hand experiences in the natural sciences and the social sciences, and experiences for community responsibilities. Each student will become more responsible as he/she cares for his/her equipment, the dining room, and the entire camp area. We believe that learning will be accomplished in this highly motivational setting.

A large number of activities have been planned, such as a visit to a fossil study, forest trails, Native American and pioneer life, crafts, pond life study, and many more activities in the areas of science, geography, history, and ecology. The students will have an opportunity to meet other students from the school district. Related pre-camp activities will help make the camping experience even more meaningful. We know the camp activities will provide memorable experiences for your child.

The cost for Camp Kern this year is \$175.00 per student to cover transportation, food, lodging for three days, and the environmental education materials used at camp. You can pay \$175 by check or by credit card with a processing and credit card fee. As educators, we believe that the value of this experience will be more meaningful if each student could earn all or part of the camp fee. **No student should miss this experience for financial reasons.** If partial or full financial assistance is needed, please contact your child's counselor.

**Please return the enclosed permission slip by February 20, 2026.**

1. **Return the Medical forms to your school by Thursday, April 16<sup>th</sup>.**
2. **Payment is also due by Thursday, April 16<sup>th</sup>, and should be made through Local Level or by check.**
3. **The link to the Camp Kern Field Trip will be on your school's website and in Resources/PreK-6 on the Forest Hills district website.**
4. **Medication is to be turned in at the school health office 7 days before leaving for Camp Kern.**

***Please read the attached information carefully. The drop-off and pick-up procedures for camp are explained in the transportation information section on the following pages.***

Sincerely,

**Camp Kern Directors**

Lexi Brower & Jimmy O'Toole, Ayer EL

Tori Casteel, Maddux EL

Karyn Toms, Sherwood EL

Tracy Moran, Summit EL

Teri Petrella, Mercer EL

Amy Lynch & Hannah Sharrer, Wilson EL

**Forest Hills Camp Kern Coordinator: Bob Buck, Director of Elementary Teaching & Learning**

7946 Beechmont Avenue | Cincinnati, Ohio 45255 | 513.231.3600 | 513-231.3830 FAX |  
[www.foresthills.edu](http://www.foresthills.edu)

## **OUR PURPOSE FOR ENVIRONMENTAL EDUCATION**

The resident Environmental Education Program for the fifth graders in the Forest Hills School District attempts to develop a sensitivity to and a sense of responsibility toward natural resources through direct, purposeful activities in the out-of-doors. Using the natural sciences and natural history interpretation as primary vehicles to achieve this goal, natural resource concern is further heightened by experiences in other areas of the curriculum such as language arts, social studies, mathematics, art, music, and recreation.

This goal is furthered by a concentration on learning by doing with an emphasis on active participation by every camper in small group activities. The program gives the students a chance to live, work, and play in cooperation with others. With nature as a setting and group effort as a goal, outdoor education seeks to evoke responses of appreciation, love, and pride from each student.

## **TRANSPORTATION INFORMATION**

Transportation to Camp Kern will be provided by Forest Hills School District buses. **Students should report to the Nagel Middle School parking lot at 7:00 A.M. on the day they leave for camp. Please follow the parking lot to the left for drop-off.**

Because of limited space, students are limited to one suitcase or bag plus his or her bedroll. We will depart from Nagel Middle School parking lot at 7:30 A.M.

**On the day the students are to return from camp, the buses will arrive from Camp Kern at 1:45 P.M. at the Nagel Middle School parking lot. Please make arrangements to have your child picked up.** If someone besides the parent or guardian is picking your child up, please tell him/her that they will need to sign to take your child. If there are any transportation problems, be sure to contact your child's teacher ahead of time.

## **2026 Overnight Schedule**

<b>MADDUX/SHERWOOD</b>	April 27	7:30 a.m. Buses leave from Nagel Middle School
	April 29	1:45 p.m. Return to Nagel Middle School
<b>AYER/SUMMIT</b>	April 29	7:30 a.m. Buses leave from Nagel Middle School
	May 1	1:45 p.m. Return to Nagel Middle School
<b>MERCER/WILSON</b>	May 6	7:30 a.m. Buses leave from Nagel Middle School
	May 8	1:45 p.m. Return to Nagel Middle School

### **2026 Day Campers Bus Schedule**

**April 27-April 29: Maddux/Sherwood    April 29-May 1: Ayer/Summit  
May 6-May 8: Mercer/Wilson**

**Central Office Address - 7946 Beechmont Ave. Cincinnati, OH 45255**

#### **Maddux/Sherwood:**

April 30th AM - Camper will ride the buses from NMS to Camp Kern

April 30th PM - Pick up at Camp Kern at 7:45pm - arrive at Central Office at 8:30pm

May 1st AM - Pick up at Central Office at 7:00am - arrive at Camp Kern at 8:00am

May 1st PM - Pick up at Camp Kern at 7:45pm - arrive at Central Office at 8:30pm

May 2nd AM - Pick up at Central Office at 7:00am - arrive at Camp Kern at 8:00am

May 2nd PM - They will ride back with others from Camp Kern to NMS

#### **Ayer/Summit:**

May 5th AM - Camper will ride the buses from NMS to Camp

May 5th PM - Pick up at Camp Kern at 7:45pm - arrive at Central Office at 8:30pm

May 6th AM - Pick up at Central Office at 7:00am - arrive at Camp Kern at 8:00am

May 6th PM - Pick up at Camp Kern at 7:45pm - arrive at Central Office at 8:30pm

May 7th AM - Pick up at Central Office at 7:00am - arrive at Camp Kern at 8:00am

May 7th PM - They will ride back with others from Camp Kern to NMS

#### **Wilson/Mercer:**

May 7th AM - Camper will ride the buses from NMS to Camp

May 7th PM - Pick up at Camp Kern at 7:45pm - arrive at Central Office at 8:30pm

May 8th AM - Pick up at Central Office at 7:00am - arrive at Camp Kern at 8:00am

May 8th PM - Pick up at Camp Kern at 7:45pm - arrive at Central Office at 8:30pm

May 9th AM - Pick up at Central Office at 7:00am - arrive at Camp Kern at 8:00am

May 9th PM - They will ride back with others from Camp Kern to NMS

## **HISTORY OF CAMP KERN AREA**

Camp Kern is located in Warren County which was once a primeval forest in southwestern Ohio. The Little Miami River cuts through the rolling hills and forest, creating a river valley rich with nature and history.

Prehistoric Native Americans lived in this area about 2,000 years ago. Fort Ancient Earthworks are a series of earthen embankments that extend for more than 3 miles on a high bluff along the Little Miami River. The Hopewell Indians who lived there from about 100 BCE to 500 AD constructed the earthworks. The Hopewell culture eventually left the area. Later, native residents built a village and a cemetery within the walls of the ancient boundaries. Much later, in the 1700s, the Miami Indian tribe used the land as their home and hunting ground.

In the 1600s and 1700s, European traders came through the area. The first white man to explore and survey the region was probably Christopher Gist, an agent for the Ohio Land Company. He passed through during the winter of 1750-51 measuring the land in order to sell it to settlers in the future.

Struggles in the area occurred between the natives and early white settlers. The Native Americans were fearful of the numbers of white settlers coming to Ohio Country and began to raid the new settlements. Americans built forts in Ohio and set out to win the land. General Josiah Harmer, General Arthur St. Clair, and General Anthony Wayne led troops out of Ft. Washington (where Cincinnati is now located) up the Miami River valley in battle. The first two American generals were defeated by the Miamis, who were led by Chief Little Turtle.

The third American battle campaign, led by General Anthony Wayne, defeated the Indians at Fallen Timbers on August 20, 1794. The Americans and the Native Americans signed the Treaty of Greenville on August 3, 1795, pledging peace in Ohio. Soon after, many settlers moved to the Warren County area and built homes. The Mount Station (a small fort) was established at Stubbs Mill Road at the Little Miami River in Warren County, near what is now Camp Kern.

As part of the Northwest Territory, Ohio became the seventeenth state in 1803. On May 1, 1803, by an act of the Ohio General Assembly, Warren County was established, giving these pioneers their own local government. The county was given the name of Warren in honor of General Joseph Warren, the brave patriot who gave Paul Revere the signal to start his memorable midnight ride.

Programs at Camp Kern will give you an opportunity to understand our country's history and experience a simulation of native and pioneer life in our area.

## **CAMP INFORMATION**

### **CAMP FACILITIES**

Camp Kern, located near Lebanon in Oregonia, Ohio, is the site for the Forest Hills School District Environmental Education program. This camp is owned and operated by the Dayton YMCA.

### **CAMP ADDRESS**

Camp Kern  
R.R. #1  
Oregonia, Ohio 45054

### **CAMP TELEPHONE**

513-932-3756 or 1-800-255-KERN  
Fax: 1-513-932-8607

### **CAMP WEBSITE**

<http://campkern.org/>

### **LOCATION**

Camp Kern is located approximately 40 miles northeast of Cincinnati. It is seven miles east of Lebanon, Ohio, near Ft. Ancient Park.

Directions: Take I-71 North to Exit 32. Turn Right off of the exit onto Rt. 123. Make an immediate left onto St. Rt. 350. Camp Kern entrance is 2 ½ miles on the right. (Do not go down the large hill and cross the river....if you do you went too far!) It is about a forty-five-minute drive each way.

### **CABINS**

Each of the cabins has well-screened windows, cement floors, and bunk beds with mattresses. Approximately ten children, one or two high school counselors, along with a parent at night, may occupy a cabin. Central bath facilities are located near the cabins.

The lodge houses the recreation area, dining hall, and kitchen. Meals will be prepared by qualified cooks on the camp staff.

### **MEDICAL CARE**

A Forest Hills School District health aide will be on duty 24 hours a day in a well-equipped dispensary. A camp doctor is on call in nearby Lebanon, Ohio, if needed. In case of an accident or serious illness, parents will be notified. If a student needs to return home, parents are responsible for transportation. **Students who bring medications must give all of them to the person collecting medicine at the time of departure to camp, or, if possible send them to school seven days before leaving for camp.**

### **SEVERE WEATHER/TORNADO INFORMATION**

Students will be instructed in procedures to follow in case of a tornado watch or warning.

## **CAMP KERN TRANSPORTATION INFORMATION**

The Forest Hills School District buses will provide transportation to and from Camp Kern. Students will be picked up at **Nagel Middle School** and will return to **Nagel Middle School** after their camp experience. (See map below for drop-off procedure.)

### **DEPARTURE at NAGEL MIDDLE SCHOOL**

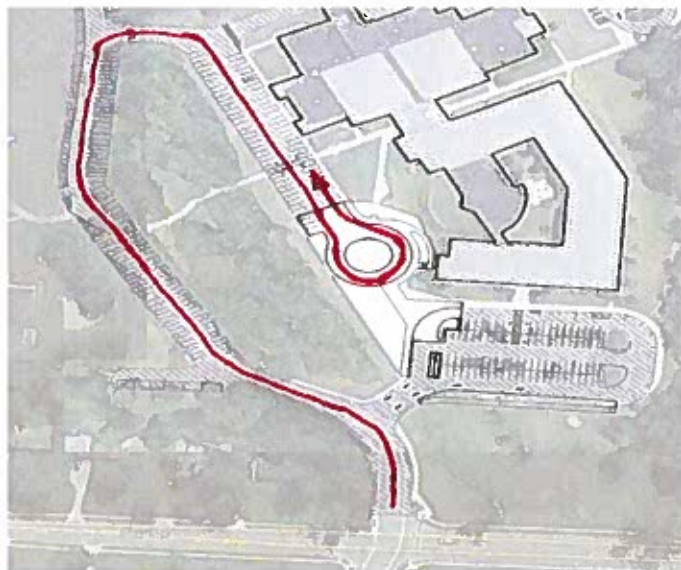
Students should arrive no earlier than 7:00 a.m. Buses will depart promptly at 7:30 a.m. We encourage parents to carpool students to help prevent traffic congestion.

Students will be given two colored labels by their classroom teacher prior to going to camp, one for their luggage and one for their bedding bag. The student's name will be printed on the tag along with the cabin number.

You will enter Nagel's parking lot, take the fork to the left, and continue until you are in the drop-off traffic circle where you will drop off your student and luggage. **Do not park.**

Students should bring their luggage/bedding bags to the truck and then report to the counselors for their cabin and check-in. Camp counselors will be holding a sign with their cabin number. The same procedure applies if it is raining.

Parents who bring **last-minute medicine** should give it to the district representative at the traffic circle and turn in the medicine **with the authorization form signed by the student's doctor.**

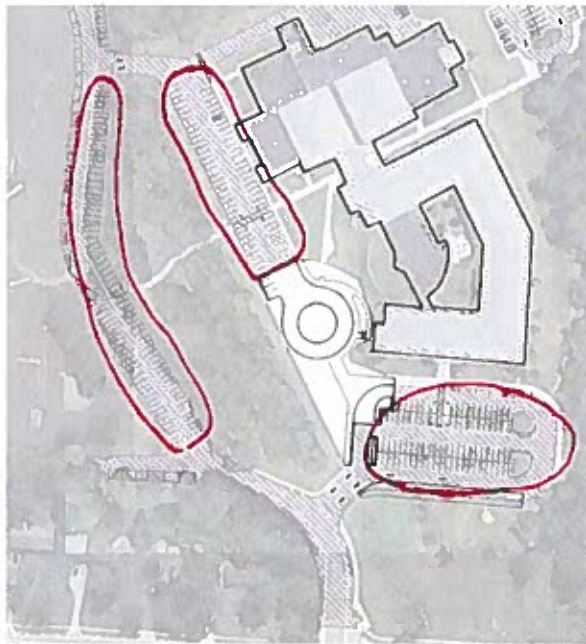




## **ARRIVAL BACK FROM CAMP at NAGEL MIDDLE SCHOOL**

Parents should make arrangements to have their child picked up between 1:45-2:10 at Nagel. **Do not arrive before 1:45 p.m. to avoid traffic congestion.** Students will not return to their home school to ride their regular transportation.

- You must park to pick up your student. You may park in any of the three lots circled on the map below. Students will be located in the grassy area near the Activity Entrance (side entrance).
- **Go to the child's cabin group and sign the child out with the cabin counselor.**
- Pick up luggage and medications which will be located near the Activity Entrance.
- In the event of rain, luggage may be put in the Nagel Cafetorium for parent pick up.



- If you are missing any items, lost and found items and forgotten medicine will be taken to the school that comes first alphabetically in the pair of schools that attended the same session. The items will remain at the first school for approximately three days and then be sent to the second school. Please do not send anything of value to camp with your child to avoid having something expensive broken or lost.
  - Schools lost/found items and medications will be taken by session to:
    - Session 1: Maddux
    - Session 2: Ayer
    - Session 3: Mercer



### **Suggested Camp Kern Packing List**

#### **Clothing List:**

- 2-3 Pairs of jeans/old pants/shorts (dependent upon weather-be sure to check)
- 2-3 Shirts for warm/cold weather
- 2-3 Changes of underwear
- 3-4 Pairs of socks
- 1 Pair of pajamas
- 1 Light sweater, jacket, or sweatshirt (dependent upon weather-be sure to check)
- 1 Heavy sweater, jacket, or sweatshirt (dependent upon weather-be sure to check)
- 1 Poncho or raincoat
- 1 Pair of boots or good walking shoes
- 1 Pair of gym shoes
- Swimsuit and flip flops for showering

#### **Equipment:**

- Sleeping bag/bed roll (2 sheets and blanket) & pillow (packed in heavy duty plastic bag)
- 1 washcloth and 2 bath towels
- Soap
- Deodorant
- Shampoo/conditioner
- Toothbrush/toothpaste
- Comb or brush
- Large plastic bag for dirty and wet clothes
- Flashlight
- Zip lock storage Big Bags (Optional—they are nice to pack clothing/equipment in)

#### **Daily Backpack:**

- Refillable water bottle
- 1 hat or cap
- Sunglasses (if wanted)
- Pencils and Student Camp Booklet (will get right before leaving for camp)
- Disposable camera (this is optional- cell phones are not allowed at camp)
- Sunblock (no spray please)
- Bug Wipes (no spray please)

**LABEL EVERYTHING WITH YOUR NAME IN PERMANENT MARKER!**

# Camp Kern Sample Menu

## Spring 2026

	Monday	Tuesday	Wednesday	Thursday	Friday
Breakfast		Scrambled Eggs Bacon Cereal Bar Fruit/Yogurt Bar Toast Bar Juice/Water	Biscuits and gravy Sausage patties Cereal Bar Fruit/Yogurt Bar Toast Bar Juice/Water	French toast Bacon Cereal Bar Fruit/Yogurt Bar Toast Bar Juice/Water	Ham omelets Hashbrowns Cereal Bar Fruit/Yogurt Bar Toast Bar Juice/Water
Lunch	Burgers Fries Salad Bar Fruit Juice/Water	Chicken Nuggets Mac and cheese Salad Bar Fruit Juice/Water	Hot Dogs Chips Salad Bar Fruit Juice/Water	Grilled cheese Tomato soup salad bar/fruit Juice/Water	Chicken salad sandwich Tater tots Salad Bar Fruit Juice/Water
Dinner	Orange chicken Fried rice Egg roll Salad Bar Dessert Water	Tacos Rice Nacho Bar Salad Bar Dessert Water	Pizza Breadsticks salad bar dessert Water	Grilled chicken Au gratin potatoes Broccoli salad bar dessert Water	



## Camp Kern Permission Slip

If you would like for your child to attend this field trip, please sign the form below and return to school no later than February 20th

.....

I hereby give permission for my child \_\_\_\_\_, to go on the field trip to Camp Kern and participate in all aspects of the visit. Camp Kern, the Board, and its employees, agents, and assigns are released from all liability for any injury to my child from participation in the Camp Kern Field Trip.

\_\_\_\_\_  
(Print Parent's Name)

\_\_\_\_\_  
(Parent's Signature & Date)

\_\_\_\_\_  
(Preferred Phone #)

\_\_\_\_\_  
(Second Preferred Phone #)

Please select what type of camper your child will be:

\_\_\_ Day Camper

\_\_\_ Overnight Camper

Please complete if needed:

Special dietary requirements: \_\_\_\_\_

Activity restrictions: \_\_\_\_\_

Other special needs (e.g., bedwetting, sleep walking, other): \_\_\_\_\_

\_\_\_\_\_  
\_\_\_\_\_